

**DATASHEET**

**BLT2 Rabbit Polyclonal Antibody**

CAT. NO. APA16078

**KEY FEATURES**

Target	BLT2	Source / Host	Rabbit
Reactivity	Human, Mouse, Rat	Clonality	Polyclonal
Applications	WB	Conjugation	Unconjugated
Form / Buffer	Liquid in 0.42% Potassium phosphate, 0.87% Sodium chloride, pH 7.3, 30% glycerol, and 0.01% sodium azide.		Storage at -20°C

**BACKGROUND**

Low-affinity receptor for leukotrienes including leukotriene B4. Mediates chemotaxis of granulocytes and macrophages. The response is mediated via G-proteins that activate a phosphatidylinositol-calcium second messenger system. The rank order of affinities for the leukotrienes is LTB4 > 12-epi-LTB4 > LTB5 > LTB3.

**APPLICATION**

To ensure optimal assay performance, AREX recommends conducting reagent titration tailored to each testing system for optimal detection results.

WB	1:500 - 1:2000
----	----------------

\*Results are sample-specific. Please refer to your local assay conditions and test parameters for reference.

**PRODUCT OVERVIEW**

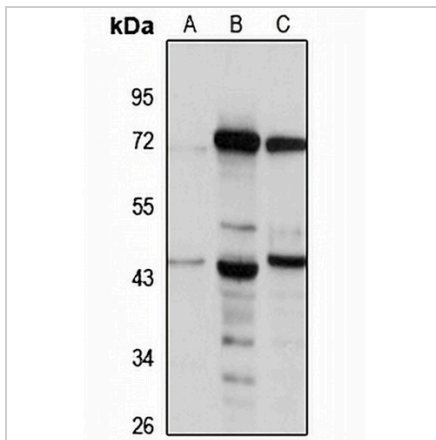
Description	Rabbit polyclonal antibody to BLT2
Specificity	Recognizes endogenous levels of BLT2 protein
Antibody Type	Primary antibody
Immunogen	Recombinant fusion protein of human BLT2. The exact sequence is proprietary.
Purification	The antibody was purified by immunogen affinity chromatography.
Molecular Weight	Predicted: 37; Observed: 43 kD
Form/Buffer	Liquid in 0.42% Potassium phosphate, 0.87% Sodium chloride, pH 7.3, 30% glycerol, and 0.01% sodium azide.
Alternative Names	BLT2R; BLTR2; Leukotriene B4 receptor 2; LTB4-R 2; LTB4-R2; LTB4 receptor JULF2; Leukotriene B4 receptor BLT2; Seven transmembrane receptor BLTR2
Gene Symbol	LTB4R2
Entrez Gene	56413(Human); 57260(Mouse); 114098(Rat)
SwissProt	Q9NPC1(Human); Q9JL9(Mouse); Q924U0(Rat)

\*AREX continuously optimizes our products. Webpage content may not reflect the latest updates. For inquiries, please contact [info@arexbio.com](mailto:info@arexbio.com) or your local distributor.

\*Clone Number, Reactivity, Source/Host and Clonality can be found in the product name and Key Features section above.

**DATASHEET****BLT2 Rabbit Polyclonal Antibody**

CAT. NO. APA16078

**DATA**

Western blot analysis of BLT2 expression in U251MG (A), mouse brain (B), rat brain (C) whole cell lysates. (Predicted band size: 37; 41 kD; Observed band size: 43 kD)

**STORAGE**

Store at 4°C short term. For long term storage, store at -20°C, avoiding freeze/thaw cycles.

**NOTE**

For Research Use Only. Not for diagnostic, therapeutics, prophylactic or in vivo use.