

DATASHEET

Lactoferrin Rabbit Polyclonal Antibody

CAT. NO. APA16080

KEY FEATURES

Target	Lactoferrin	Source / Host	Rabbit
Reactivity	Human, Mouse, Rat	Clonality	Polyclonal
Applications	WB, IHC	Conjugation	Unconjugated
Form / Buffer	Liquid in 0.42% Potassium phosphate, 0.87% Sodium chloride, pH 7.3, 30% glycerol, and 0.01% sodium azide.	Storage	at-20°C

BACKGROUND

Transferrins are iron binding transport proteins which can bind two Fe(3+) ions in association with the binding of an anion, usually bicarbonate.

APPLICATION

To ensure optimal assay performance, AREX recommends conducting reagent titration tailored to each testing system for optimal detection results.

WB	1:500 - 1:2000
IHC	1:50 - 1:200

*Results are sample-specific. Please refer to your local assay conditions and test parameters for reference.

PRODUCT OVERVIEW

Description	Rabbit polyclonal antibody to Lactoferrin
Specificity	Recognizes endogenous levels of Lactoferrin protein
Antibody Type	Primary antibody
Immunogen	Recombinant fusion protein of human Lactoferrin. The exact sequence is proprietary.
Purification	The antibody was purified by immunogen affinity chromatography.
Molecular Weight	Predicted: 73; Observed: 78 kD
Form/Buffer	Liquid in 0.42% Potassium phosphate, 0.87% Sodium chloride, pH 7.3, 30% glycerol, and 0.01% sodium azide.
Alternative Names	GIG12; LF; Lactotransferrin; Lactoferrin; Growth-inhibiting protein 12; Talalactoferrin
Gene Symbol	LTF
Entrez Gene	4057(Human); 17002(Mouse)
SwissProt	P02788(Human); P08071(Mouse)

*AREX continuously optimizes our products. Webpage content may not reflect the latest updates. For inquiries, please contact info@arexbio.com or your local distributor.

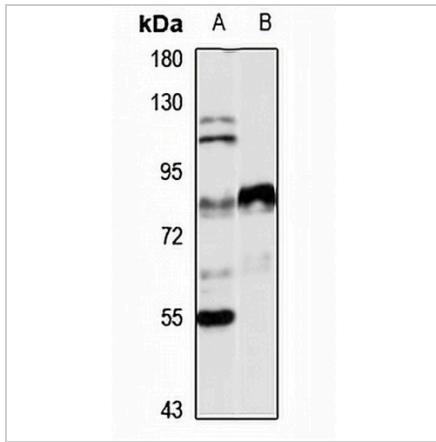
*Clone Number, Reactivity, Source/Host and Clonality can be found in the product name and Key Features section above.

DATASHEET

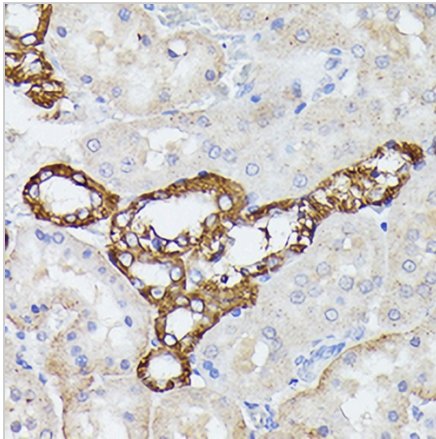
Lactoferrin Rabbit Polyclonal Antibody

CAT. NO. APA16080

DATA



Western blot analysis of Lactoferrin expression in mouse lung (A), rat lung (B) whole cell lysates. (Predicted band size: 73; 78 kD; Observed band size: 78 kD)



Immunohistochemical analysis of Lactoferrin staining in rat kidney formalin fixed paraffin embedded tissue section. The section was pre-treated using heat mediated antigen retrieval with sodium citrate buffer (pH 6.0). The section was then incubated with the antibody at room temperature and detected using an HRP conjugated compact polymer system. DAB was used as the chromogen. The section was then counterstained with haematoxylin and mounted with DPX.

STORAGE

Store at 4°C short term. For long term storage, store at -20°C, avoiding freeze/thaw cycles.

NOTE

For Research Use Only. Not for diagnostic, therapeutics, prophylactic or in vivo use.