

DATASHEET

LYPD3 Rabbit Polyclonal Antibody

CAT. NO. APA16081

KEY FEATURES

Target	LYPD3	Source / Host	Rabbit
Reactivity	Human	Clonality	Polyclonal
Applications	WB	Conjugation	Unconjugated
Form / Buffer	Liquid in 0.42% Potassium phosphate, 0.87% Sodium chloride, pH 7.3, 30% glycerol, and 0.01% sodium azide.		Storage at -20°C

BACKGROUND

Supports cell migration. May be involved in urothelial cell-matrix interactions. May be involved in tumor progression.

APPLICATION

To ensure optimal assay performance, AREX recommends conducting reagent titration tailored to each testing system for optimal detection results.

WB	1:500 - 1:2000
----	----------------

*Results are sample-specific. Please refer to your local assay conditions and test parameters for reference.

PRODUCT OVERVIEW

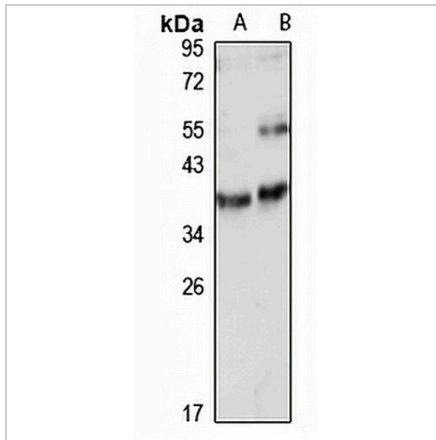
Description	Rabbit polyclonal antibody to LYPD3
Specificity	Recognizes endogenous levels of LYPD3 protein
Antibody Type	Primary antibody
Immunogen	Recombinant fusion protein of human LYPD3. The exact sequence is proprietary.
Purification	The antibody was purified by immunogen affinity chromatography.
Molecular Weight	Predicted: 35 kD; Observed: 36 kD
Form/Buffer	Liquid in 0.42% Potassium phosphate, 0.87% Sodium chloride, pH 7.3, 30% glycerol, and 0.01% sodium azide.
Alternative Names	C4.4A; Ly6/PLAUR domain-containing protein 3; GPI-anchored metastasis-associated protein C4.4A homolog; Matrigel-induced gene C4 protein; MIG-C4
Gene Symbol	LYPD3
Entrez Gene	27076(Human)
SwissProt	O95274(Human)

*AREX continuously optimizes our products. Webpage content may not reflect the latest updates. For inquiries, please contact info@arexbio.com or your local distributor.

*Clone Number, Reactivity, Source/Host and Clonality can be found in the product name and Key Features section above.

DATASHEET**LYPD3 Rabbit Polyclonal Antibody**

CAT. NO. APA16081

DATA**STORAGE**

Store at 4°C short term. For long term storage, store at -20°C, avoiding freeze/thaw cycles.

NOTE

For Research Use Only. Not for diagnostic, therapeutics, prophylactic or in vivo use.