

DATASHEET

LYPLA2 Rabbit Polyclonal Antibody

CAT. NO. APA16082

KEY FEATURES

Target	LYPLA2	Source / Host	Rabbit
Reactivity	Human, Mouse, Rat	Clonality	Polyclonal
Applications	WB	Conjugation	Unconjugated
Form / Buffer	Liquid in 0.42% Potassium phosphate, 0.87% Sodium chloride, pH 7.3, 30% glycerol, and 0.01% sodium azide.		Storage at -20°C

BACKGROUND

Acts as an acyl-protein thioesterase hydrolyzing fatty acids from S-acylated cysteine residues in proteins such as trimeric G alpha proteins, GSDMD, GAP43, ZDHHC6 or HRAS . Deacylates GAP43 . Mediates depalmitoylation of ZDHHC6 . Has lysophospholipase activity . Hydrolyzes prostaglandin glycerol esters (PG-Gs) in the following order prostaglandin D2-glycerol ester (PGD2-G) > prostaglandin E2 glycerol ester (PGE2-G) > prostaglandin F2-alpha-glycerol ester (PGF2-alpha-G) . Hydrolyzes 1-arachidonoylglycerol but not 2-arachidonoylglycerol or arachidonylethanolamide .

APPLICATION

To ensure optimal assay performance, AREX recommends conducting reagent titration tailored to each testing system for optimal detection results.

WB	1:500 - 1:2000
----	----------------

*Results are sample-specific. Please refer to your local assay conditions and test parameters for reference.

PRODUCT OVERVIEW

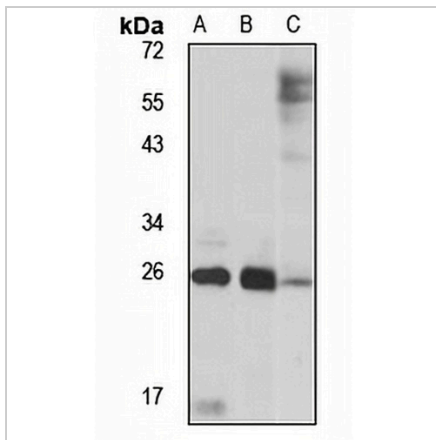
Description	Rabbit polyclonal antibody to LYPLA2
Specificity	Recognizes endogenous levels of LYPLA2 protein
Antibody Type	Primary antibody
Immunogen	Recombinant fusion protein of human LYPLA2. The exact sequence is proprietary.
Purification	The antibody was purified by immunogen affinity chromatography.
Molecular Weight	Predicted: 24 kD; Observed: 25 kD
Form/Buffer	Liquid in 0.42% Potassium phosphate, 0.87% Sodium chloride, pH 7.3, 30% glycerol, and 0.01% sodium azide.
Alternative Names	APT2; Acyl-protein thioesterase 2; APT-2; Lysophospholipase II; LPL-II; LysoPLA II
Gene Symbol	LYPLA2
Entrez Gene	11313(Human); 26394(Mouse); 83510(Rat)
SwissProt	O95372(Human); Q9WTL7(Mouse); Q9QYL8(Rat)

*AREX continuously optimizes our products. Webpage content may not reflect the latest updates. For inquiries, please contact info@arexbio.com or your local distributor.

*Clone Number, Reactivity, Source/Host and Clonality can be found in the product name and Key Features section above.

DATASHEET**LYPLA2 Rabbit Polyclonal Antibody**

CAT. NO. APA16082

DATA

Western blot analysis of LYPLA2 expression in HT29 (A), mouse brain (B), rat lung (C) whole cell lysates. (Predicted band size: 24 kD; Observed band size: 25 kD)

STORAGE

Store at 4°C short term. For long term storage, store at -20°C, avoiding freeze/thaw cycles.

NOTE

For Research Use Only. Not for diagnostic, therapeutics, prophylactic or in vivo use.