

**DATASHEET**

**LAPSER1 Rabbit Polyclonal Antibody**

CAT. NO. APA16084

**KEY FEATURES**

Target	LAPSER1	Source / Host	Rabbit
Reactivity	Human, Mouse, Rat	Clonality	Polyclonal
Applications	WB	Conjugation	Unconjugated
Form / Buffer	Liquid in 0.42% Potassium phosphate, 0.87% Sodium chloride, pH 7.3, 30% glycerol, and 0.01% sodium azide.		Storage at-20°C

**BACKGROUND**

Negative regulator of katanin-mediated microtubule severing and release from the centrosome. Required for central spindle formation and the completion of cytokinesis. May negatively regulate axonal outgrowth by preventing the formation of microtubule bundles that are necessary for transport within the elongating axon. Negative regulator of the Wnt signaling pathway. Represses beta-catenin-mediated transcriptional activation by promoting the nuclear exclusion of beta-catenin.

**APPLICATION**

To ensure optimal assay performance, AREX recommends conducting reagent titration tailored to each testing system for optimal detection results.

WB	1:500 - 1:2000
----	----------------

\*Results are sample-specific. Please refer to your local assay conditions and test parameters for reference.

**PRODUCT OVERVIEW**

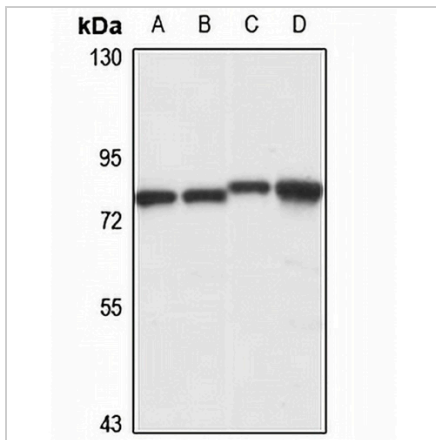
Description	Rabbit polyclonal antibody to LAPSER1
Specificity	Recognizes endogenous levels of LAPSER1 protein
Antibody Type	Primary antibody
Immunogen	Recombinant fusion protein of human LAPSER1. The exact sequence is proprietary.
Purification	The antibody was purified by immunogen affinity chromatography.
Molecular Weight	Predicted: 72 kD; Observed: 73 kD
Form/Buffer	Liquid in 0.42% Potassium phosphate, 0.87% Sodium chloride, pH 7.3, 30% glycerol, and 0.01% sodium azide.
Alternative Names	KIAA1813; LAPSER1; Leucine zipper putative tumor suppressor 2; hLZTS2; Protein LAPSER1
Gene Symbol	LZTS2
Entrez Gene	84445(Human); 226154(Mouse); 365468(Rat)
SwissProt	Q9BRK4(Human); Q91YU6(Mouse); Q3LUD4(Rat)

\*AREX continuously optimizes our products. Webpage content may not reflect the latest updates. For inquiries, please contact [info@arexbio.com](mailto:info@arexbio.com) or your local distributor.

\*Clone Number, Reactivity, Source/Host and Clonality can be found in the product name and Key Features section above.

**DATASHEET****LAPSER1 Rabbit Polyclonal Antibody**

CAT. NO. APA16084

**DATA**

Western blot analysis of LAPSER1 expression in HT29 (A), HeLa (B), mouse brain (C), rat kidney (D) whole cell lysates. (Predicted band size: 72 kD; Observed band size: 73 kD)

**STORAGE**

Store at 4°C short term. For long term storage, store at -20°C, avoiding freeze/thaw cycles.

**NOTE**

For Research Use Only. Not for diagnostic, therapeutics, prophylactic or in vivo use.