

DATASHEET

MAN1B1 Rabbit Polyclonal Antibody

CAT. NO. APA16093

KEY FEATURES

Target	MAN1B1	Source / Host	Rabbit
Reactivity	Human, Mouse, Rat	Clonality	Polyclonal
Applications	WB	Conjugation	Unconjugated
Form / Buffer	Liquid in 0.42% Potassium phosphate, 0.87% Sodium chloride, pH 7.3, 30% glycerol, and 0.01% sodium azide.		Storage at-20°C

BACKGROUND

Involved in glycoprotein quality control targeting of misfolded glycoproteins for degradation. It primarily trims a single alpha-1,2-linked mannose residue from Man(9)GlcNAc(2) to produce Man(8)GlcNAc(2), but at high enzyme concentrations, as found in the ER quality control compartment (ERQC), it further trims the carbohydrates to Man(5-6)GlcNAc(2).

APPLICATION

To ensure optimal assay performance, AREX recommends conducting reagent titration tailored to each testing system for optimal detection results.

WB	1:500 - 1:2000
----	----------------

*Results are sample-specific. Please refer to your local assay conditions and test parameters for reference.

PRODUCT OVERVIEW

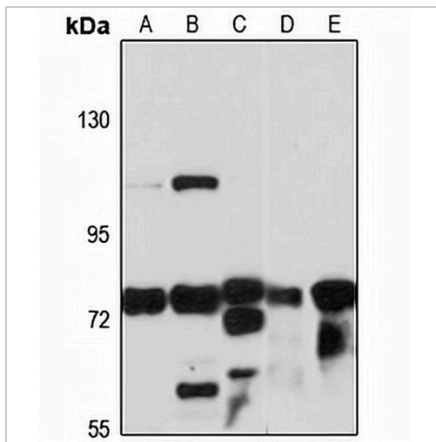
Description	Rabbit polyclonal antibody to MAN1B1
Specificity	Recognizes endogenous levels of MAN1B1 protein
Antibody Type	Primary antibody
Immunogen	Recombinant fusion protein of human MAN1B1. The exact sequence is proprietary.
Purification	The antibody was purified by immunogen affinity chromatography.
Molecular Weight	Predicted: 79 kD; Observed: 80 kD
Form/Buffer	Liquid in 0.42% Potassium phosphate, 0.87% Sodium chloride, pH 7.3, 30% glycerol, and 0.01% sodium azide.
Alternative Names	Endoplasmic reticulum mannosyl-oligosaccharide 1 2-alpha-mannosidase; ER alpha-1 2-mannosidase; ER mannosidase 1; ERMan1; Man9GlcNAc2-specific-processing alpha-mannosidase; Mannosidase alpha class 1B member 1
Gene Symbol	MAN1B1
Entrez Gene	11253(Human); 227619(Mouse); 499751(Rat)
SwissProt	Q9UKM7(Human); A2AJ15(Mouse); B2GUY0(Rat)

*AREX continuously optimizes our products. Webpage content may not reflect the latest updates. For inquiries, please contact info@arexbio.com or your local distributor.

*Clone Number, Reactivity, Source/Host and Clonality can be found in the product name and Key Features section above.

DATASHEET**MAN1B1 Rabbit Polyclonal Antibody**

CAT. NO. APA16093

DATA

Western blot analysis of MAN1B1 expression in A549 (A), HeLa (B), mouse kidney (C), mouse spleen (D), rat brain (E) whole cell lysates. (Predicted band size: 79 kD; Observed band size: 80 kD)

STORAGE

Store at 4°C short term. For long term storage, store at -20°C, avoiding freeze/thaw cycles.

NOTE

For Research Use Only. Not for diagnostic, therapeutics, prophylactic or in vivo use.