

DATASHEET

MAN1C1 Rabbit Polyclonal Antibody

CAT. NO. APA16094

KEY FEATURES

Target	MAN1C1	Source / Host	Rabbit
Reactivity	Human, Mouse	Clonality	Polyclonal
Applications	WB	Conjugation	Unconjugated
Form / Buffer	Liquid in 0.42% Potassium phosphate, 0.87% Sodium chloride, pH 7.3, 30% glycerol, and 0.01% sodium azide.		Storage at -20°C

BACKGROUND

Involved in the maturation of Asn-linked oligosaccharides. Trim alpha-1,2-linked mannose residues from Man(9)GlcNAc(2) to produce first Man(8)GlcNAc(2) then Man(6)GlcNAc and a small amount of Man(5)GlcNAc.

APPLICATION

To ensure optimal assay performance, AREX recommends conducting reagent titration tailored to each testing system for optimal detection results.

WB	1:500 - 1:2000
----	----------------

*Results are sample-specific. Please refer to your local assay conditions and test parameters for reference.

PRODUCT OVERVIEW

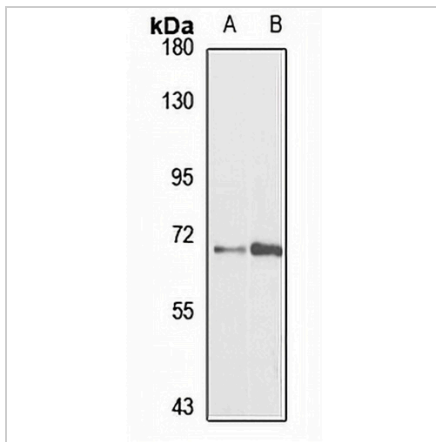
Description	Rabbit polyclonal antibody to MAN1C1
Specificity	Recognizes endogenous levels of MAN1C1 protein
Antibody Type	Primary antibody
Immunogen	Recombinant fusion protein of human MAN1C1. The exact sequence is proprietary.
Purification	The antibody was purified by immunogen affinity chromatography.
Molecular Weight	Predicted: 70 kD; Observed: 68 kD
Form/Buffer	Liquid in 0.42% Potassium phosphate, 0.87% Sodium chloride, pH 7.3, 30% glycerol, and 0.01% sodium azide.
Alternative Names	MAN1A3; MAN1C; Mannosyl-oligosaccharide 1 2-alpha-mannosidase IC; HMIC; Mannosidase alpha class 1C member 1; Processing alpha-1 2-mannosidase IC; Alpha-1 2-mannosidase IC
Gene Symbol	MAN1C1
Entrez Gene	57134(Human)
SwissProt	Q9NR34(Human)

*AREX continuously optimizes our products. Webpage content may not reflect the latest updates. For inquiries, please contact info@arexbio.com or your local distributor.

*Clone Number, Reactivity, Source/Host and Clonality can be found in the product name and Key Features section above.

DATASHEET**MAN1C1 Rabbit Polyclonal Antibody**

CAT. NO. APA16094

DATA

Western blot analysis of MAN1C1 expression in HepG2 (A), mouse liver (B) whole cell lysates. (Predicted band size: 70 kD; Observed band size: 68 kD)

STORAGE

Store at 4°C short term. For long term storage, store at -20°C, avoiding freeze/thaw cycles.

NOTE

For Research Use Only. Not for diagnostic, therapeutics, prophylactic or in vivo use.