

**DATASHEET**

**ARMET Rabbit Polyclonal Antibody**

CAT. NO. APA16098

**KEY FEATURES**

|               |   |               |                     |
|---------------|---|---------------|---------------------|
| Target        | ARMET   | Source / Host | Rabbit              |
| Reactivity    | Human, Mouse, Rat   | Clonality     | Polyclonal          |
| Applications  | WB, IHC   | Conjugation   | Unconjugated        |
| Form / Buffer | Liquid in 0.42% Potassium phosphate, 0.87% Sodium chloride, pH 7.3, 30% glycerol, and 0.01% sodium azide. |               | Storage<br>at -20°C |

**BACKGROUND**

Selectively promotes the survival of dopaminergic neurons of the ventral mid-brain . Modulates GABAergic transmission to the dopaminergic neurons of the substantia nigra . Enhances spontaneous, as well as evoked, GABAergic inhibitory postsynaptic currents in dopaminergic neurons . Inhibits cell proliferation and endoplasmic reticulum (ER) stress-induced cell death . Retained in the ER/sarcoplasmic reticulum (SR) through association with the endoplasmic reticulum chaperone protein HSPA5 under normal conditions . Stabilizes HSPA5/BiP in its substrate-bound ADP state, which facilitates HSPA5/BiP incorporation into chaperone-client complexes during endoplasmic reticulum stress, its interaction with HSPA5/BiP inhibits ATP binding to HSPA5/BiP and subsequent nucleotide exchange .

**APPLICATION**

To ensure optimal assay performance, AREX recommends conducting reagent titration tailored to each testing system for optimal detection results.

|     |                |
|-----|----------------|
| WB  | 1:500 - 1:2000 |
| IHC | 1:50 - 1:200   |

\*Results are sample-specific. Please refer to your local assay conditions and test parameters for reference.

**PRODUCT OVERVIEW**

|                   |   |
|-------------------|---|
| Description       | Rabbit polyclonal antibody to ARMET   |
| Specificity       | Recognizes endogenous levels of ARMET protein   |
| Antibody Type     | Primary antibody  |
| Immunogen         | Recombinant fusion protein of human ARMET. The exact sequence is proprietary.                             |
| Purification      | The antibody was purified by immunogen affinity chromatography.   |
| Molecular Weight  | Predicted: 20 kD; Observed: 16 kD   |
| Form/Buffer       | Liquid in 0.42% Potassium phosphate, 0.87% Sodium chloride, pH 7.3, 30% glycerol, and 0.01% sodium azide. |
| Alternative Names | ARMET; ARP; Mesencephalic astrocyte-derived neurotrophic factor; Arginine-rich protein; Protein ARMET     |
| Gene Symbol       | MANF  |
| Entrez Gene       | 7873(Human)   |
| SwissProt         | P55145(Human)   |

\*AREX continuously optimizes our products. Webpage content may not reflect the latest updates. For inquiries, please contact [info@arexbio.com](mailto:info@arexbio.com) or your local distributor.

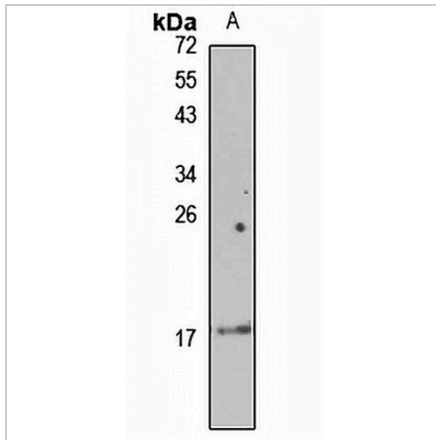
\*Clone Number, Reactivity, Source/Host and Clonality can be found in the product name and Key Features section above.

**DATASHEET**

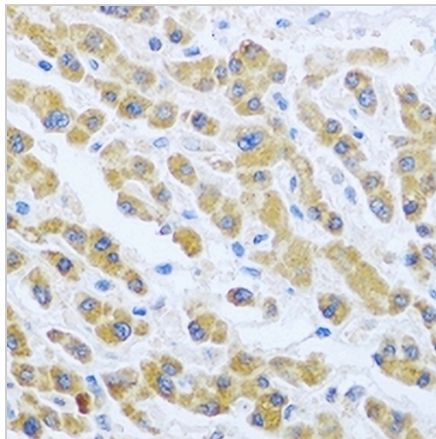
**ARMET Rabbit Polyclonal Antibody**

CAT. NO. APA16098

**DATA**



Western blot analysis of ARMET expression in MCF7 (A) whole cell lysates. (Predicted band size: 20 kD; Observed band size: 16 kD)



Immunohistochemical analysis of ARMET staining in human liver formalin fixed paraffin embedded tissue section. The section was pre-treated using heat mediated antigen retrieval with sodium citrate buffer (pH 6.0). The section was then incubated with the antibody at room temperature and detected using an HRP conjugated compact polymer system. DAB was used as the chromogen. The section was then counterstained with haematoxylin and mounted with DPX.

**STORAGE**

Store at 4°C short term. For long term storage, store at -20°C, avoiding freeze/thaw cycles.

**NOTE**

For Research Use Only. Not for diagnostic, therapeutics, prophylactic or in vivo use.