

DATASHEET

LC3C Rabbit Polyclonal Antibody

CAT. NO. APA16099

KEY FEATURES

Target	LC3C	Source / Host	Rabbit
Reactivity	Human, Mouse, Rat	Clonality	Polyclonal
Applications	WB, IHC, IF/ICC	Conjugation	Unconjugated
Form / Buffer	Liquid in 0.42% Potassium phosphate, 0.87% Sodium chloride, pH 7.3, 30% glycerol, and 0.01% sodium azide.		Storage at -20°C

BACKGROUND

Ubiquitin-like modifier that plays a crucial role in antibacterial autophagy (xenophagy) through the selective binding of CALCOCO2 through the selective binding of CALCOCO2. Recruits all ATG8 family members to infecting bacteria such as S.typhimurium. May also play a role in aggrephagy, the macroautophagic degradation of ubiquitinated and aggregated proteins.

APPLICATION

To ensure optimal assay performance, AREX recommends conducting reagent titration tailored to each testing system for optimal detection results.

WB	1:500 - 1:2000
IHC	1:50 - 1:200
IF/ICC	1:50 - 1:200

*Results are sample-specific. Please refer to your local assay conditions and test parameters for reference.

PRODUCT OVERVIEW

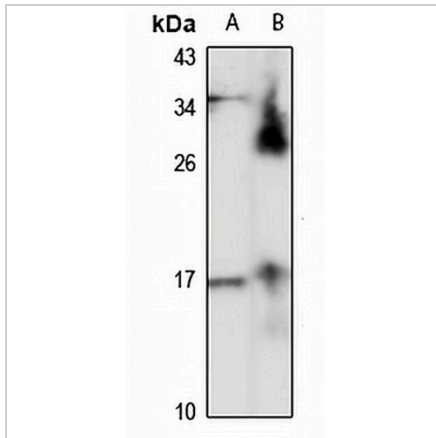
Description	Rabbit polyclonal antibody to LC3C
Specificity	Recognizes endogenous levels of LC3C protein
Antibody Type	Primary antibody
Immunogen	Recombinant fusion protein of human LC3C. The exact sequence is proprietary.
Purification	The antibody was purified by immunogen affinity chromatography.
Molecular Weight	Predicted: 16 kD; Observed: 17 kD
Form/Buffer	Liquid in 0.42% Potassium phosphate, 0.87% Sodium chloride, pH 7.3, 30% glycerol, and 0.01% sodium azide.
Alternative Names	Microtubule-associated proteins 1A/1B light chain 3C; Autophagy-related protein LC3 C; Autophagy-related ubiquitin-like modifier LC3 C; MAP1 light chain 3-like protein 3; MAP1A/MAP1B light chain 3 C; MAP1A/MAP1B LC3 C; Microtubule-associated protein 1 light chain 3 gamma
Gene Symbol	MAP1LC3C
Entrez Gene	440738(Human)
SwissProt	Q9BXW4(Human)

*AREX continuously optimizes our products. Webpage content may not reflect the latest updates. For inquiries, please contact info@arexbio.com or your local distributor.

*Clone Number, Reactivity, Source/Host and Clonality can be found in the product name and Key Features section above.

DATASHEET**LC3C Rabbit Polyclonal Antibody**

CAT. NO. APA16099

DATA

Western blot analysis of LC3C expression in HepG2 (A), rat lung (B) whole cell lysates. (Predicted band size: 16 kD; Observed band size: 17 kD)

STORAGE

Store at 4°C short term. For long term storage, store at -20°C, avoiding freeze/thaw cycles.

NOTE

For Research Use Only. Not for diagnostic, therapeutics, prophylactic or in vivo use.