

**DATASHEET**

**DLK Rabbit Polyclonal Antibody**

CAT. NO. APA16100

**KEY FEATURES**

Target	DLK	Source / Host	Rabbit
Reactivity	Human, Mouse	Clonality	Polyclonal
Applications	WB	Conjugation	Unconjugated
Form / Buffer	Liquid in 0.42% Potassium phosphate, 0.87% Sodium chloride, pH 7.3, 30% glycerol, and 0.01% sodium azide.		Storage at-20°C

**BACKGROUND**

Part of a non-canonical MAPK signaling pathway . Activated by APOE, enhances the AP-1-mediated transcription of APP, via a MAP kinase signal transduction pathway composed of MAP2K7 and MAPK1/ERK2 and MAPK3/ERK1 . May be an activator of the JNK/SAPK pathway.

**APPLICATION**

To ensure optimal assay performance, AREX recommends conducting reagent titration tailored to each testing system for optimal detection results.

WB	1:500 - 1:2000
----	----------------

\*Results are sample-specific. Please refer to your local assay conditions and test parameters for reference.

**PRODUCT OVERVIEW**

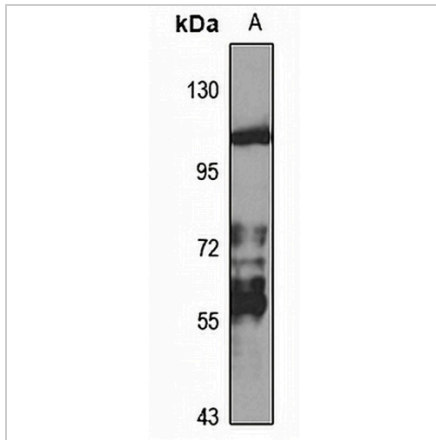
Description	Rabbit polyclonal antibody to DLK
Specificity	Recognizes endogenous levels of DLK protein
Antibody Type	Primary antibody
Immunogen	Recombinant fusion protein of human DLK. The exact sequence is proprietary.
Purification	The antibody was purified by immunogen affinity chromatography.
Molecular Weight	Predicted: 93; Observed: 110 kD
Form/Buffer	Liquid in 0.42% Potassium phosphate, 0.87% Sodium chloride, pH 7.3, 30% glycerol, and 0.01% sodium azide.
Alternative Names	ZPK; Mitogen-activated protein kinase kinase kinase 12; Dual leucine zipper bearing kinase; DLK; Leucine-zipper protein kinase; ZPK; MAPK-upstream kinase; MUK; Mixed lineage kinase
Gene Symbol	MAP3K12
Entrez Gene	7786(Human); 26404(Mouse)
SwissProt	Q12852(Human); Q60700(Mouse)

\*AREX continuously optimizes our products. Webpage content may not reflect the latest updates. For inquiries, please contact [info@arexbio.com](mailto:info@arexbio.com) or your local distributor.

\*Clone Number, Reactivity, Source/Host and Clonality can be found in the product name and Key Features section above.

**DATASHEET****DLK Rabbit Polyclonal Antibody**

CAT. NO. APA16100

**DATA**

Western blot analysis of DLK expression in SHSY5Y (A) whole cell lysates. (Predicted band size: 93; 96 kD; Observed band size: 110 kD)

**STORAGE**

Store at 4°C short term. For long term storage, store at -20°C, avoiding freeze/thaw cycles.

**NOTE**

For Research Use Only. Not for diagnostic, therapeutics, prophylactic or in vivo use.