

DATASHEET

MAPKAP1 Rabbit Polyclonal Antibody

CAT. NO. APA16106

KEY FEATURES

Target	MAPKAP1	Source / Host	Rabbit
Reactivity	Human, Mouse, Rat	Clonality	Polyclonal
Applications	WB	Conjugation	Unconjugated
Form / Buffer	Liquid in 0.42% Potassium phosphate, 0.87% Sodium chloride, pH 7.3, 30% glycerol, and 0.01% sodium azide.		Storage at -20°C

BACKGROUND

Component of the mechanistic target of rapamycin complex 2 (mTORC2), which transduces signals from growth factors to pathways involved in proliferation, cytoskeletal organization, lipogenesis and anabolic output, which transduces signals from growth factors to pathways involved in proliferation, cytoskeletal organization, lipogenesis and anabolic output. In response to growth factors, mTORC2 phosphorylates and activates AGC protein kinase family members, including AKT (AKT1, AKT2 and AKT3), PKC (PRKCA, PRKCB and PRKCE) and SGK1. In contrast to mTORC1, mTORC2 is nutrient-insensitive. Within the mTORC2 complex, MAPKAP1/SIN1 acts as a substrate adapter which recognizes and binds AGC protein kinase family members for phosphorylation by MTOR.

APPLICATION

To ensure optimal assay performance, AREX recommends conducting reagent titration tailored to each testing system for optimal detection results.

WB	1:500 - 1:2000
----	----------------

*Results are sample-specific. Please refer to your local assay conditions and test parameters for reference.

PRODUCT OVERVIEW

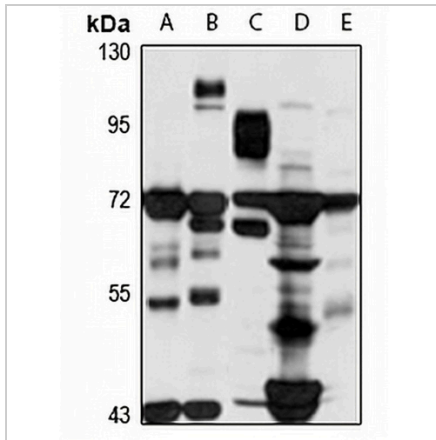
Description	Rabbit polyclonal antibody to MAPKAP1
Specificity	Recognizes endogenous levels of MAPKAP1 protein
Antibody Type	Primary antibody
Immunogen	Recombinant fusion protein of human MAPKAP1. The exact sequence is proprietary.
Purification	The antibody was purified by immunogen affinity chromatography.
Molecular Weight	Predicted: 36; Observed: 69; 71 kD
Form/Buffer	Liquid in 0.42% Potassium phosphate, 0.87% Sodium chloride, pH 7.3, 30% glycerol, and 0.01% sodium azide.
Alternative Names	MIP1; SIN1; Target of rapamycin complex 2 subunit MAPKAP1; TORC2 subunit MAPKAP1; Mitogen-activated protein kinase 2-associated protein 1; Stress-activated map kinase-interacting protein 1; SAPK-interacting protein 1; mSIN1
Gene Symbol	MAPKAP1
Entrez Gene	79109(Human); 227743(Mouse); 296648(Rat)
SwissProt	Q9BPZ7(Human); Q8BKH7(Mouse); Q6AYF1(Rat)

*AREX continuously optimizes our products. Webpage content may not reflect the latest updates. For inquiries, please contact info@arexbio.com or your local distributor.

*Clone Number, Reactivity, Source/Host and Clonality can be found in the product name and Key Features section above.

DATASHEET**MAPKAP1 Rabbit Polyclonal Antibody**

CAT. NO. APA16106

DATA

Western blot analysis of MAPKAP1 expression in HEK293T (A), SGC7901 (B), mouse kidney (C), mouse liver (D), rat lung (E) whole cell lysates. (Predicted band size: 36; 37; 41; 53; 54; 59 kD; Observed band size: 69; 71 kD)

STORAGE

Store at 4°C short term. For long term storage, store at -20°C, avoiding freeze/thaw cycles.

NOTE

For Research Use Only. Not for diagnostic, therapeutics, prophylactic or in vivo use.