

DATASHEET

MC1 Receptor Rabbit Polyclonal Antibody

CAT. NO. APA16109

KEY FEATURES

| | | | |
|---------------|---|---------------|---------------------|
| Target | MC1 Receptor | Source / Host | Rabbit |
| Reactivity | Human, Mouse, Rat | Clonality | Polyclonal |
| Applications | WB | Conjugation | Unconjugated |
| Form / Buffer | Liquid in 0.42% Potassium phosphate, 0.87% Sodium chloride, pH 7.3, 30% glycerol, and 0.01% sodium azide. | | Storage at -20°C |

BACKGROUND

G protein-coupled receptor that binds melanocyte-stimulating hormones (alpha, beta, and gamma-MSH) and adrenocorticotrophic hormone/ACTH, which are peptide products of the POMC precursor protein and adrenocorticotrophic hormone/ACTH, which are peptide products of the POMC precursor protein . Upon activation, MC1R couples with the G(s) protein, stimulating adenylate cyclase and activating the cAMP-dependent signaling pathway. This activation promotes melanogenesis, resulting in the production of eumelanin (black/brown) and pheomelanin (red/yellow) in melanocytes . MC1R interacts with G protein-coupled receptor opsin 3/OPN3, which couples to G(i) proteins and inhibits the alpha-MSH-induced cAMP response, thereby reducing melanin synthesis .

APPLICATION

To ensure optimal assay performance, AREX recommends conducting reagent titration tailored to each testing system for optimal detection results.

| | |
|----|----------------|
| WB | 1:500 - 1:2000 |
|----|----------------|

*Results are sample-specific. Please refer to your local assay conditions and test parameters for reference.

PRODUCT OVERVIEW

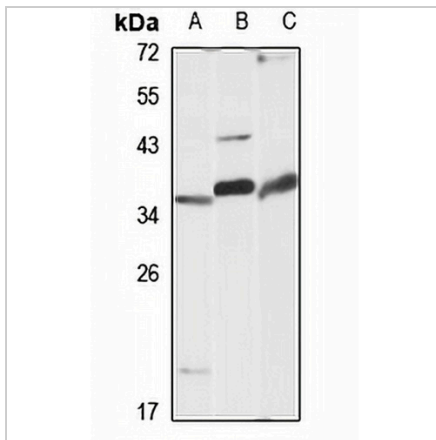
| | |
|-------------------|---|
| Description | Rabbit polyclonal antibody to MC1 Receptor |
| Specificity | Recognizes endogenous levels of MC1 Receptor protein |
| Antibody Type | Primary antibody |
| Immunogen | KLH-conjugated synthetic peptide of human MC1 Receptor. The exact sequence is proprietary. |
| Purification | The antibody was purified by immunogen affinity chromatography. |
| Molecular Weight | Predicted: 34 kD; Observed: 36 kD |
| Form/Buffer | Liquid in 0.42% Potassium phosphate, 0.87% Sodium chloride, pH 7.3, 30% glycerol, and 0.01% sodium azide. |
| Alternative Names | MSHR; Melanocyte-stimulating hormone receptor; MSH-R; Melanocortin receptor 1; MC1-R |
| Gene Symbol | MC1R |
| Entrez Gene | 4157(Human); 17199(Mouse) |
| SwissProt | Q01726(Human); Q01727(Mouse) |

*AREX continuously optimizes our products. Webpage content may not reflect the latest updates. For inquiries, please contact info@arexbio.com or your local distributor.

*Clone Number, Reactivity, Source/Host and Clonality can be found in the product name and Key Features section above.

DATASHEET**MC1 Receptor Rabbit Polyclonal Antibody**

CAT. NO. APA16109

DATA

Western blot analysis of MC1 Receptor expression in HeLa (A), mouse heart (B), rat heart (C) whole cell lysates. (Predicted band size: 34 kD; Observed band size: 36 kD)

STORAGE

Store at 4°C short term. For long term storage, store at -20°C, avoiding freeze/thaw cycles.

NOTE

For Research Use Only. Not for diagnostic, therapeutics, prophylactic or in vivo use.