

DATASHEET

MC2 Receptor Rabbit Polyclonal Antibody

CAT. NO. APA16110

KEY FEATURES

Target	MC2 Receptor	Source / Host	Rabbit
Reactivity	Human	Clonality	Polyclonal
Applications	WB, IHC	Conjugation	Unconjugated
Form / Buffer	Liquid in 0.42% Potassium phosphate, 0.87% Sodium chloride, pH 7.3, 30% glycerol, and 0.01% sodium azide.		Storage at-20°C

BACKGROUND

G protein-coupled receptor for corticotropin/ACTH, primarily expressed in adrenal cortex where it plays a key role in the regulation of adrenocortical function . Upon activation, couples to G(s) protein, stimulating adenylate cyclase and activating the cAMP-dependent signaling pathway, the MAPK cascade as well as the PKA pathway, leading to steroidogenic factor 1/NR5A1-mediated transcriptional activation . Activation by ACTH facilitates the release of adrenal glucocorticoids, including cortisol and corticosterone . In addition, MC2R is required for fetal and neonatal adrenal gland development .

APPLICATION

To ensure optimal assay performance, AREX recommends conducting reagent titration tailored to each testing system for optimal detection results.

WB	1:500 - 1:2000
IHC	1:50 - 1:200

*Results are sample-specific. Please refer to your local assay conditions and test parameters for reference.

PRODUCT OVERVIEW

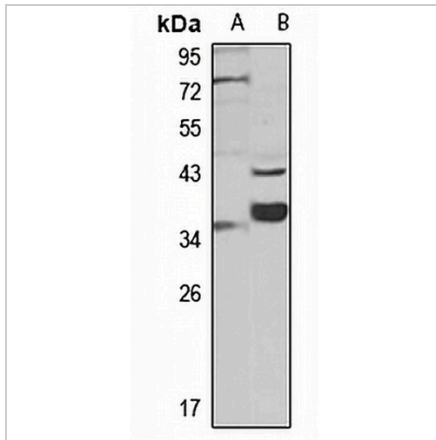
Description	Rabbit polyclonal antibody to MC2 Receptor
Specificity	Recognizes endogenous levels of MC2 Receptor protein
Antibody Type	Primary antibody
Immunogen	Recombinant fusion protein of human MC2 Receptor. The exact sequence is proprietary.
Purification	The antibody was purified by immunogen affinity chromatography.
Molecular Weight	Predicted: 33 kD; Observed: 37 kD
Form/Buffer	Liquid in 0.42% Potassium phosphate, 0.87% Sodium chloride, pH 7.3, 30% glycerol, and 0.01% sodium azide.
Alternative Names	ACTHR; Adrenocorticotropin hormone receptor; ACTH receptor; ACTH-R; Adrenocorticotropin receptor; Melanocortin receptor 2; MC2-R
Gene Symbol	MC2R
Entrez Gene	4158(Human); 17200(Mouse)
SwissProt	Q01718(Human); Q64326(Mouse)

*AREX continuously optimizes our products. Webpage content may not reflect the latest updates. For inquiries, please contact info@arexbio.com or your local distributor.

*Clone Number, Reactivity, Source/Host and Clonality can be found in the product name and Key Features section above.

DATASHEET**MC2 Receptor Rabbit Polyclonal Antibody**

CAT. NO. APA16110

DATA

Western blot analysis of MC2 Receptor expression in Raji (A), mouse kidney (B) whole cell lysates. (Predicted band size: 33 kD; Observed band size: 37 kD)

STORAGE

Store at 4°C short term. For long term storage, store at -20°C, avoiding freeze/thaw cycles.

NOTE

For Research Use Only. Not for diagnostic, therapeutics, prophylactic or in vivo use.