

**DATASHEET**

**MCAT Rabbit Polyclonal Antibody**

CAT. NO. APA16111

**KEY FEATURES**

Target	MCAT	Source / Host	Rabbit
Reactivity	Human	Clonality	Polyclonal
Applications	WB	Conjugation	Unconjugated
Form / Buffer	Liquid in 0.42% Potassium phosphate, 0.87% Sodium chloride, pH 7.3, 30% glycerol, and 0.01% sodium azide.		Storage at -20°C

**BACKGROUND**

Catalyzes the transfer of a malonyl moiety from malonyl-CoA to the free thiol group of the phosphopantetheine arm of the mitochondrial ACP protein (NDUFAB1). This suggests the existence of the biosynthesis of fatty acids in mitochondria. Also acts as a mitochondrial small ribosomal subunit (mt-SSU) assembly factor.

**APPLICATION**

To ensure optimal assay performance, AREX recommends conducting reagent titration tailored to each testing system for optimal detection results.

WB	1:500 - 1:1000
----	----------------

\*Results are sample-specific. Please refer to your local assay conditions and test parameters for reference.

**PRODUCT OVERVIEW**

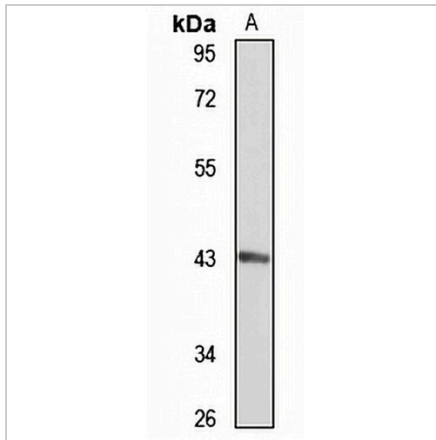
Description	Rabbit polyclonal antibody to MCAT
Specificity	Recognizes endogenous levels of MCAT protein
Antibody Type	Primary antibody
Immunogen	Recombinant fusion protein of human MCAT. The exact sequence is proprietary.
Purification	The antibody was purified by immunogen affinity chromatography.
Molecular Weight	Predicted: 19; Observed: 43 kD
Form/Buffer	Liquid in 0.42% Potassium phosphate, 0.87% Sodium chloride, pH 7.3, 30% glycerol, and 0.01% sodium azide.
Alternative Names	MT; Malonyl-CoA-acyl carrier protein transacylase mitochondrial; MCT; Mitochondrial malonyl CoA:ACP acyltransferase; Mitochondrial malonyltransferase; [Acyl-carrier-protein] malonyltransferase
Gene Symbol	MCAT
Entrez Gene	27349(Human)
SwissProt	Q8IVS2(Human)

\*AREX continuously optimizes our products. Webpage content may not reflect the latest updates. For inquiries, please contact [info@arexbio.com](mailto:info@arexbio.com) or your local distributor.

\*Clone Number, Reactivity, Source/Host and Clonality can be found in the product name and Key Features section above.

**DATASHEET****MCAT Rabbit Polyclonal Antibody**

CAT. NO. APA16111

**DATA**

Western blot analysis of MCAT expression in LO2 (A) whole cell lysates. (Predicted band size: 19; 42 kD; Observed band size: 43 kD)

**STORAGE**

Store at 4°C short term. For long term storage, store at -20°C, avoiding freeze/thaw cycles.

**NOTE**

For Research Use Only. Not for diagnostic, therapeutics, prophylactic or in vivo use.