

**DATASHEET**

**MCCA Rabbit Polyclonal Antibody**

CAT. NO. APA16113

**KEY FEATURES**

Target	MCCA	Source / Host	Rabbit
Reactivity	Human, Mouse, Rat	Clonality	Polyclonal
Applications	WB, IHC	Conjugation	Unconjugated
Form / Buffer	Liquid in 0.42% Potassium phosphate, 0.87% Sodium chloride, pH 7.3, 30% glycerol, and 0.01% sodium azide.		Storage at -20°C

**BACKGROUND**

Biotin-attachment subunit of the 3-methylcrotonyl-CoA carboxylase, an enzyme that catalyzes the conversion of 3-methylcrotonyl-CoA to 3-methylglutaconyl-CoA, a critical step for leucine and isovaleric acid catabolism.

**APPLICATION**

To ensure optimal assay performance, AREX recommends conducting reagent titration tailored to each testing system for optimal detection results.

WB	1:500 - 1:2000
IHC	1:50 - 1:200

\*Results are sample-specific. Please refer to your local assay conditions and test parameters for reference.

**PRODUCT OVERVIEW**

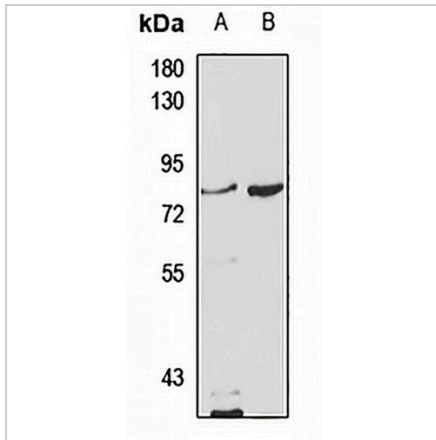
Description	Rabbit polyclonal antibody to MCCA
Specificity	Recognizes endogenous levels of MCCA protein
Antibody Type	Primary antibody
Immunogen	Recombinant fusion protein of human MCCA. The exact sequence is proprietary.
Purification	The antibody was purified by immunogen affinity chromatography.
Molecular Weight	Predicted: 80 kD; Observed: 80 kD
Form/Buffer	Liquid in 0.42% Potassium phosphate, 0.87% Sodium chloride, pH 7.3, 30% glycerol, and 0.01% sodium azide.
Alternative Names	MCCA; Methylcrotonoyl-CoA carboxylase subunit alpha mitochondrial; MCCase subunit alpha; 3-methylcrotonyl-CoA carboxylase 1; 3-methylcrotonyl-CoA carboxylase biotin-containing subunit; 3-methylcrotonyl-CoA:carbon dioxide ligase subunit alpha
Gene Symbol	MCCC1
Entrez Gene	56922(Human); 72039(Mouse); 294972(Rat)
SwissProt	Q96RQ3(Human); Q99MR8(Mouse); Q5I0C3(Rat)

\*AREX continuously optimizes our products. Webpage content may not reflect the latest updates. For inquiries, please contact [info@arexbio.com](mailto:info@arexbio.com) or your local distributor.

\*Clone Number, Reactivity, Source/Host and Clonality can be found in the product name and Key Features section above.

**DATASHEET****MCCA Rabbit Polyclonal Antibody**

CAT. NO. APA16113

**DATA**

Western blot analysis of MCCA expression in Jurkat (A), mouse kidney (B) whole cell lysates. (Predicted band size: 80 kD; Observed band size: 80 kD)

**STORAGE**

Store at 4°C short term. For long term storage, store at -20°C, avoiding freeze/thaw cycles.

**NOTE**

For Research Use Only. Not for diagnostic, therapeutics, prophylactic or in vivo use.