

DATASHEET

DBL Rabbit Polyclonal Antibody

CAT. NO. APA16115

KEY FEATURES

Target	DBL	Source / Host	Rabbit
Reactivity	Human, Mouse, Rat	Clonality	Polyclonal
Applications	WB	Conjugation	Unconjugated
Form / Buffer	Liquid in 0.42% Potassium phosphate, 0.87% Sodium chloride, pH 7.3, 30% glycerol, and 0.01% sodium azide.		Storage at-20°C

BACKGROUND

Guanine nucleotide exchange factor (GEF) that modulates the Rho family of GTPases. Promotes the conversion of some member of the Rho family GTPase from the GDP-bound to the GTP-bound form. Isoform 1 exhibits no activity toward RHOA, RAC1 or CDC42. Isoform 2 exhibits decreased GEF activity toward CDC42. Isoform 3 exhibits a weak but significant activity toward RAC1 and CDC42. Isoform 4 exhibits significant activity toward RHOA and CDC42. The truncated DBL oncogene is active toward RHOA, RAC1 and CDC42.

APPLICATION

To ensure optimal assay performance, AREX recommends conducting reagent titration tailored to each testing system for optimal detection results.

WB	1:500 - 1:2000
----	----------------

*Results are sample-specific. Please refer to your local assay conditions and test parameters for reference.

PRODUCT OVERVIEW

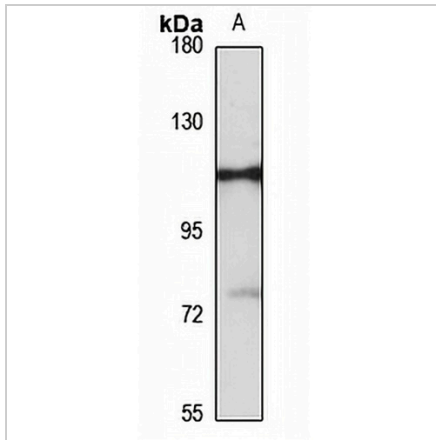
Description	Rabbit polyclonal antibody to DBL
Specificity	Recognizes endogenous levels of DBL protein
Antibody Type	Primary antibody
Immunogen	Recombinant fusion protein of human DBL. The exact sequence is proprietary.
Purification	The antibody was purified by immunogen affinity chromatography.
Molecular Weight	Predicted: 95; Observed: 108 kD
Form/Buffer	Liquid in 0.42% Potassium phosphate, 0.87% Sodium chloride, pH 7.3, 30% glycerol, and 0.01% sodium azide.
Alternative Names	DBL; Proto-oncogene DBL; Proto-oncogene MCF-2
Gene Symbol	MCF2
Entrez Gene	4168(Human)
SwissProt	P10911(Human)

*AREX continuously optimizes our products. Webpage content may not reflect the latest updates. For inquiries, please contact info@arexbio.com or your local distributor.

*Clone Number, Reactivity, Source/Host and Clonality can be found in the product name and Key Features section above.

DATASHEET**DBL Rabbit Polyclonal Antibody**

CAT. NO. APA16115

DATA

Western blot analysis of DBL expression in HT29 (A) whole cell lysates. (Predicted band size: 95; 100; 107; 109; 114; 116 kD; Observed band size: 108 kD)

STORAGE

Store at 4°C short term. For long term storage, store at -20°C, avoiding freeze/thaw cycles.

NOTE

For Research Use Only. Not for diagnostic, therapeutics, prophylactic or in vivo use.