

DATASHEET

CCDC109A Rabbit Polyclonal Antibody

CAT. NO. APA16119

KEY FEATURES

Target	CCDC109A	Source / Host	Rabbit
Reactivity	Human, Mouse, Rat	Clonality	Polyclonal
Applications	WB	Conjugation	Unconjugated
Form / Buffer	Liquid in 0.42% Potassium phosphate, 0.87% Sodium chloride, pH 7.3, 30% glycerol, and 0.01% sodium azide.		Storage at-20°C

BACKGROUND

Channel-forming and calcium-conducting subunit of the mitochondrial inner membrane calcium uniporter complex (uniporter), which mediates calcium uptake into the mitochondrial matrix, which mediates calcium uptake into the mitochondrial matrix. MCU channel activity is regulated by the calcium-sensor subunits of the uniporter MICU1 and MICU2 (or MICU3). Mitochondrial calcium homeostasis plays key roles in cellular physiology and regulates ATP production, cytoplasmic calcium signals and activation of cell death pathways. Involved in buffering the amplitude of systolic calcium rises in cardiomyocytes.

APPLICATION

To ensure optimal assay performance, AREX recommends conducting reagent titration tailored to each testing system for optimal detection results.

WB	1:500 - 1:2000
----	----------------

*Results are sample-specific. Please refer to your local assay conditions and test parameters for reference.

PRODUCT OVERVIEW

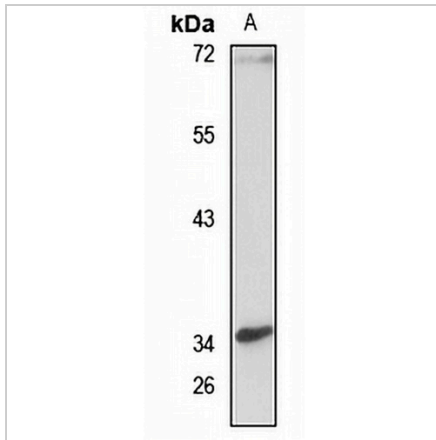
Description	Rabbit polyclonal antibody to CCDC109A
Specificity	Recognizes endogenous levels of CCDC109A protein
Antibody Type	Primary antibody
Immunogen	Recombinant fusion protein of human CCDC109A. The exact sequence is proprietary.
Purification	The antibody was purified by immunogen affinity chromatography.
Molecular Weight	Predicted: 39 kD; Observed: 35 kD
Form/Buffer	Liquid in 0.42% Potassium phosphate, 0.87% Sodium chloride, pH 7.3, 30% glycerol, and 0.01% sodium azide.
Alternative Names	C10orf42; CCDC109A; Calcium uniporter protein mitochondrial; Coiled-coil domain-containing protein 109A
Gene Symbol	MCU
Entrez Gene	90550(Human); 215999(Mouse)
SwissProt	Q8NE86(Human); Q3UMR5(Mouse)

*AREX continuously optimizes our products. Webpage content may not reflect the latest updates. For inquiries, please contact info@arexbio.com or your local distributor.

*Clone Number, Reactivity, Source/Host and Clonality can be found in the product name and Key Features section above.

DATASHEET**CCDC109A Rabbit Polyclonal Antibody**

CAT. NO. APA16119

DATA

Western blot analysis of CCDC109A expression in mouse kidney (A) whole cell lysates.
(Predicted band size: 39 kD; Observed band size: 35 kD)

STORAGE

Store at 4°C short term. For long term storage, store at -20°C, avoiding freeze/thaw cycles.

NOTE

For Research Use Only. Not for diagnostic, therapeutics, prophylactic or in vivo use.