

DATASHEET

MEAF6 Rabbit Polyclonal Antibody

CAT. NO. APA16122

KEY FEATURES

Target	MEAF6	Source / Host	Rabbit
Reactivity	Human, Mouse	Clonality	Polyclonal
Applications	WB	Conjugation	Unconjugated
Form / Buffer	Liquid in 0.42% Potassium phosphate, 0.87% Sodium chloride, pH 7.3, 30% glycerol, and 0.01% sodium azide.		Storage at -20°C

BACKGROUND

Component of the NuA4 histone acetyltransferase complex which is involved in transcriptional activation of select genes principally by acetylation of nucleosomal histone H4 and H2A . This modification may both alter nucleosome - DNA interactions and promote interaction of the modified histones with other proteins which positively regulate transcription . Component of HBO1 complexes, which specifically mediate acetylation of histone H3 at 'Lys-14' (H3K14ac), and have reduced activity toward histone H4 . Component of the MOZ/MORF complex which has a histone H3 acetyltransferase activity .

APPLICATION

To ensure optimal assay performance, AREX recommends conducting reagent titration tailored to each testing system for optimal detection results.

WB	1:500 - 1:2000
----	----------------

*Results are sample-specific. Please refer to your local assay conditions and test parameters for reference.

PRODUCT OVERVIEW

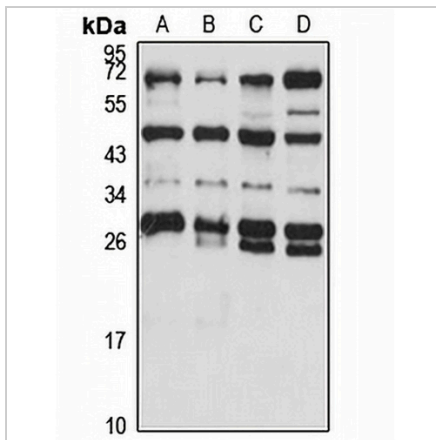
Description	Rabbit polyclonal antibody to MEAF6
Specificity	Recognizes endogenous levels of MEAF6 protein
Antibody Type	Primary antibody
Immunogen	Recombinant fusion protein of human MEAF6. The exact sequence is proprietary.
Purification	The antibody was purified by immunogen affinity chromatography.
Molecular Weight	Predicted: 21; Observed: 27 kD
Form/Buffer	Liquid in 0.42% Potassium phosphate, 0.87% Sodium chloride, pH 7.3, 30% glycerol, and 0.01% sodium azide.
Alternative Names	C1orf149; EAF6; Chromatin modification-related protein MEAF6; MYST/Esa1-associated factor 6; Esa1-associated factor 6 homolog; Protein EAF6 homolog; hEAF6; Sarcoma antigen NY-SAR-91
Gene Symbol	MEAF6
Entrez Gene	64769(Human); 70088(Mouse)
SwissProt	Q9HAF1(Human); Q2VPQ9(Mouse)

*AREX continuously optimizes our products. Webpage content may not reflect the latest updates. For inquiries, please contact info@arexbio.com or your local distributor.

*Clone Number, Reactivity, Source/Host and Clonality can be found in the product name and Key Features section above.

DATASHEET**MEAF6 Rabbit Polyclonal Antibody**

CAT. NO. APA16122

DATA

Western blot analysis of MEAF6 expression in HeLa (A), NIH3T3 (B), mouse brain (C), mouse kidney (D) whole cell lysates. (Predicted band size: 21; 22 kD; Observed band size: 27 kD)

STORAGE

Store at 4°C short term. For long term storage, store at -20°C, avoiding freeze/thaw cycles.

NOTE

For Research Use Only. Not for diagnostic, therapeutics, prophylactic or in vivo use.