

DATASHEET

MESDC2 Rabbit Polyclonal Antibody

CAT. NO. APA16130

KEY FEATURES

Target	MESDC2	Source / Host	Rabbit
Reactivity	Human, Mouse, Rat	Clonality	Polyclonal
Applications	WB	Conjugation	Unconjugated
Form / Buffer	Liquid in 0.42% Potassium phosphate, 0.87% Sodium chloride, pH 7.3, 30% glycerol, and 0.01% sodium azide.		Storage at-20°C

BACKGROUND

Chaperone specifically assisting the folding of beta-propeller/EGF modules within the family of low-density lipoprotein receptors (LDLRs) . Acts as a modulator of the Wnt pathway through chaperoning the coreceptors of the canonical Wnt pathway, LRP5 and LRP6, to the plasma membrane . Essential for specification of embryonic polarity and mesoderm induction. Plays an essential role in neuromuscular junction (NMJ) formation by promoting cell-surface expression of LRP4 . May regulate phagocytosis of apoptotic retinal pigment epithelium (RPE) cells .

APPLICATION

To ensure optimal assay performance, AREX recommends conducting reagent titration tailored to each testing system for optimal detection results.

WB	1:500 - 1:2000
----	----------------

*Results are sample-specific. Please refer to your local assay conditions and test parameters for reference.

PRODUCT OVERVIEW

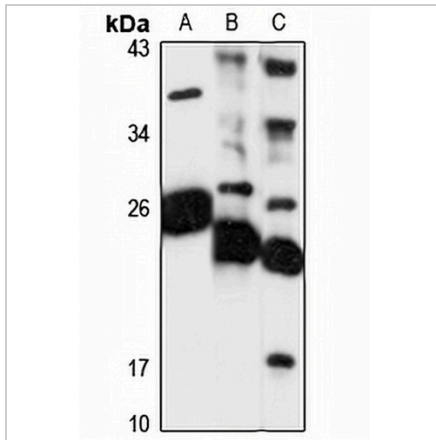
Description	Rabbit polyclonal antibody to MESDC2
Specificity	Recognizes endogenous levels of MESDC2 protein
Antibody Type	Primary antibody
Immunogen	Recombinant fusion protein of human MESDC2. The exact sequence is proprietary.
Purification	The antibody was purified by immunogen affinity chromatography.
Molecular Weight	Predicted: 26 kD; Observed: 26 kD
Form/Buffer	Liquid in 0.42% Potassium phosphate, 0.87% Sodium chloride, pH 7.3, 30% glycerol, and 0.01% sodium azide.
Alternative Names	KIAA0081; MESD; LDLR chaperone MESD; Mesoderm development candidate 2; Mesoderm development protein; Renal carcinoma antigen NY-REN-61
Gene Symbol	MESDC2
Entrez Gene	23184(Human); 67943(Mouse); 308796(Rat)
SwissProt	Q14696(Human); Q9ERE7(Mouse); Q5U2R7(Rat)

*AREX continuously optimizes our products. Webpage content may not reflect the latest updates. For inquiries, please contact info@arexbio.com or your local distributor.

*Clone Number, Reactivity, Source/Host and Clonality can be found in the product name and Key Features section above.

DATASHEET**MESDC2 Rabbit Polyclonal Antibody**

CAT. NO. APA16130

DATA

Western blot analysis of MESDC2 expression in HepG2 (A), mouse brain (B), rat heart (C) whole cell lysates. (Predicted band size: 26 kD; Observed band size: 26 kD)

STORAGE

Store at 4°C short term. For long term storage, store at -20°C, avoiding freeze/thaw cycles.

NOTE

For Research Use Only. Not for diagnostic, therapeutics, prophylactic or in vivo use.