

DATASHEET

METTL1 Rabbit Polyclonal Antibody

CAT. NO. APA16132

KEY FEATURES

Target	METTL1	Source / Host	Rabbit
Reactivity	Human	Clonality	Polyclonal
Applications	WB	Conjugation	Unconjugated
Form / Buffer	Liquid in 0.42% Potassium phosphate, 0.87% Sodium chloride, pH 7.3, 30% glycerol, and 0.01% sodium azide.		Storage at -20°C

BACKGROUND

Catalytic component of METTL1-WDR4 methyltransferase complex that mediates the formation of N(7)-methylguanine in a subset of RNA species, such as tRNAs, mRNAs and microRNAs (miRNAs) -methylguanine in a subset of RNA species, such as tRNAs, mRNAs and microRNAs (miRNAs) . Catalyzes the formation of N(7)-methylguanine at position 46 (m7G46) in a large subset of tRNAs that contain the 5'-RAGGU-3' motif within the variable loop . M7G46 interacts with C13-G22 in the D-loop to stabilize tRNA tertiary structure and protect tRNAs from decay . Also acts as a methyltransferase for a subset of internal N(7)-methylguanine in mRNAs . Internal N(7)-methylguanine methylation of mRNAs in response to stress promotes their relocalization to stress granules, thereby suppressing their translation .

APPLICATION

To ensure optimal assay performance, AREX recommends conducting reagent titration tailored to each testing system for optimal detection results.

WB	1:500 - 1:2000
----	----------------

*Results are sample-specific. Please refer to your local assay conditions and test parameters for reference.

PRODUCT OVERVIEW

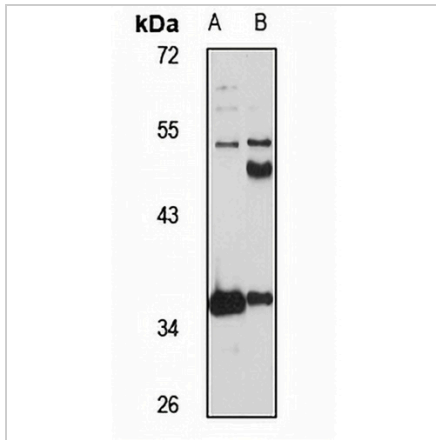
Description	Rabbit polyclonal antibody to METTL1
Specificity	Recognizes endogenous levels of METTL1 protein
Antibody Type	Primary antibody
Immunogen	Recombinant fusion protein of human METTL1. The exact sequence is proprietary.
Purification	The antibody was purified by immunogen affinity chromatography.
Molecular Weight	Predicted: 17; Observed: 37 kD
Form/Buffer	Liquid in 0.42% Potassium phosphate, 0.87% Sodium chloride, pH 7.3, 30% glycerol, and 0.01% sodium azide.
Alternative Names	C12orf1; tRNA (guanine-N(7)-)-methyltransferase (Methyltransferase-like protein 1; tRNA (guanine(46)-N(7))-methyltransferase; tRNA(m7G46)-methyltransferase
Gene Symbol	METTL1
Entrez Gene	4234(Human)
SwissProt	Q9UBP6(Human)

*AREX continuously optimizes our products. Webpage content may not reflect the latest updates. For inquiries, please contact info@arexbio.com or your local distributor.

*Clone Number, Reactivity, Source/Host and Clonality can be found in the product name and Key Features section above.

DATASHEET**METTL1 Rabbit Polyclonal Antibody**

CAT. NO. APA16132

DATA**STORAGE**

Store at 4°C short term. For long term storage, store at -20°C, avoiding freeze/thaw cycles.

NOTE

For Research Use Only. Not for diagnostic, therapeutics, prophylactic or in vivo use.