

DATASHEET

METTL4 Rabbit Polyclonal Antibody

CAT. NO. APA16136

KEY FEATURES

Target	METTL4	Source / Host	Rabbit
Reactivity	Human, Mouse, Rat	Clonality	Polyclonal
Applications	WB	Conjugation	Unconjugated
Form / Buffer	Liquid in 0.42% Potassium phosphate, 0.87% Sodium chloride, pH 7.3, 30% glycerol, and 0.01% sodium azide.		Storage at -20°C

BACKGROUND

N(6)-adenine-specific methyltransferase that can methylate both RNAs and DNA. Acts as a N(6)-adenine-specific RNA methyltransferase by catalyzing formation of N6,2'-O-dimethyladenosine (m6A(m)) on internal positions of U2 small nuclear RNA (snRNA): methylates the 6th position of adenine residues with a pre-deposited 2'-O-methylation. Internal m6A(m) methylation of snRNAs regulates RNA splicing. Also able to act as a N(6)-adenine-specific DNA methyltransferase by mediating methylation of DNA on the 6th position of adenine (N(6)-methyladenosine).

APPLICATION

To ensure optimal assay performance, AREX recommends conducting reagent titration tailored to each testing system for optimal detection results.

WB	1:500 - 1:2000
----	----------------

*Results are sample-specific. Please refer to your local assay conditions and test parameters for reference.

PRODUCT OVERVIEW

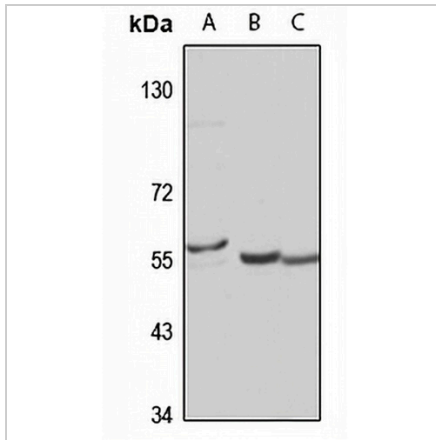
Description	Rabbit polyclonal antibody to METTL4
Specificity	Recognizes endogenous levels of METTL4 protein
Antibody Type	Primary antibody
Immunogen	Recombinant fusion protein of human METTL4. The exact sequence is proprietary.
Purification	The antibody was purified by immunogen affinity chromatography.
Molecular Weight	Predicted: 54 kD; Observed: 54 kD
Form/Buffer	Liquid in 0.42% Potassium phosphate, 0.87% Sodium chloride, pH 7.3, 30% glycerol, and 0.01% sodium azide.
Alternative Names	Methyltransferase-like protein 4
Gene Symbol	METTL4
Entrez Gene	64863(Human); 76781(Mouse)
SwissProt	Q8N3J2(Human); Q3U034(Mouse)

*AREX continuously optimizes our products. Webpage content may not reflect the latest updates. For inquiries, please contact info@arexbio.com or your local distributor.

*Clone Number, Reactivity, Source/Host and Clonality can be found in the product name and Key Features section above.

DATASHEET**METTL4 Rabbit Polyclonal Antibody**

CAT. NO. APA16136

DATA

Western blot analysis of METTL4 expression in HeLa (A), mouse brain (B), rat brain (C) whole cell lysates. (Predicted band size: 54 kD; Observed band size: 54 kD)

STORAGE

Store at 4°C short term. For long term storage, store at -20°C, avoiding freeze/thaw cycles.

NOTE

For Research Use Only. Not for diagnostic, therapeutics, prophylactic or in vivo use.