

**DATASHEET**

**METTL5 Rabbit Polyclonal Antibody**

CAT. NO. APA16137

**KEY FEATURES**

Target	METTL5	Source / Host	Rabbit
Reactivity	Human, Mouse, Rat	Clonality	Polyclonal
Applications	WB	Conjugation	Unconjugated
Form / Buffer	Liquid in 0.42% Potassium phosphate, 0.87% Sodium chloride, pH 7.3, 30% glycerol, and 0.01% sodium azide.		Storage at -20°C

**BACKGROUND**

Catalytic subunit of a heterodimer with TRMT112, which specifically methylates the 6th position of adenine in position 1832 of 18S rRNA. N6-methylation of adenine(1832) in 18S rRNA resides in the decoding center of 18S rRNA and is required for translation and embryonic stem cells (ESCs) pluripotency and differentiation.

**APPLICATION**

To ensure optimal assay performance, AREX recommends conducting reagent titration tailored to each testing system for optimal detection results.

WB	1:500 - 1:2000
----	----------------

\*Results are sample-specific. Please refer to your local assay conditions and test parameters for reference.

**PRODUCT OVERVIEW**

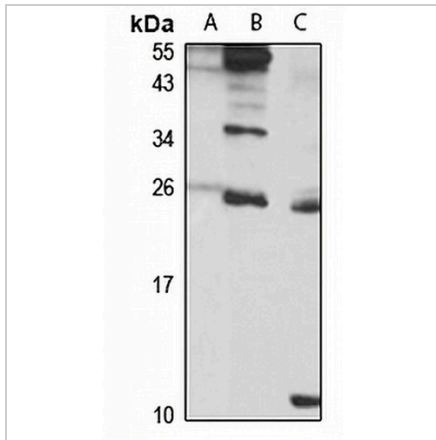
Description	Rabbit polyclonal antibody to METTL5
Specificity	Recognizes endogenous levels of METTL5 protein
Antibody Type	Primary antibody
Immunogen	Recombinant fusion protein of human METTL5. The exact sequence is proprietary.
Purification	The antibody was purified by immunogen affinity chromatography.
Molecular Weight	Predicted: 23 kD; Observed: 24 kD
Form/Buffer	Liquid in 0.42% Potassium phosphate, 0.87% Sodium chloride, pH 7.3, 30% glycerol, and 0.01% sodium azide.
Alternative Names	Methyltransferase-like protein 5
Gene Symbol	METTL5
Entrez Gene	29081(Human); 75422(Mouse)
SwissProt	Q9NRN9(Human); Q8K1A0(Mouse)

\*AREX continuously optimizes our products. Webpage content may not reflect the latest updates. For inquiries, please contact [info@arexbio.com](mailto:info@arexbio.com) or your local distributor.

\*Clone Number, Reactivity, Source/Host and Clonality can be found in the product name and Key Features section above.

**DATASHEET****METTL5 Rabbit Polyclonal Antibody**

CAT. NO. APA16137

**DATA**

Western blot analysis of METTL5 expression in U251MG (A), mouse kidney (B), rat liver (C) whole cell lysates. (Predicted band size: 23 kD; Observed band size: 24 kD)

**STORAGE**

Store at 4°C short term. For long term storage, store at -20°C, avoiding freeze/thaw cycles.

**NOTE**

For Research Use Only. Not for diagnostic, therapeutics, prophylactic or in vivo use.