

DATASHEET

MICAL1 Rabbit Polyclonal Antibody

CAT. NO. APA16148

KEY FEATURES

Target	MICAL1	Source / Host	Rabbit
Reactivity	Human, Mouse, Rat	Clonality	Polyclonal
Applications	WB	Conjugation	Unconjugated
Form / Buffer	Liquid in 0.42% Potassium phosphate, 0.87% Sodium chloride, pH 7.3, 30% glycerol, and 0.01% sodium azide.		Storage at -20°C

BACKGROUND

Monoxygenase that promotes depolymerization of F-actin by mediating oxidation of specific methionine residues on actin to form methionine-sulfoxide, resulting in actin filament disassembly and preventing repolymerization. In the absence of actin, it also functions as a NADPH oxidase producing H₂O₂. Acts as a cytoskeletal regulator that connects NEDD9 to intermediate filaments. Also acts as a negative regulator of apoptosis via its interaction with STK38 and STK38L; acts by antagonizing STK38 and STK38L activation by MST1/STK4. Involved in regulation of lamina-specific connectivity in the nervous system such as the development of lamina-restricted hippocampal connections.

APPLICATION

To ensure optimal assay performance, AREX recommends conducting reagent titration tailored to each testing system for optimal detection results.

WB	1:500 - 1:2000
----	----------------

*Results are sample-specific. Please refer to your local assay conditions and test parameters for reference.

PRODUCT OVERVIEW

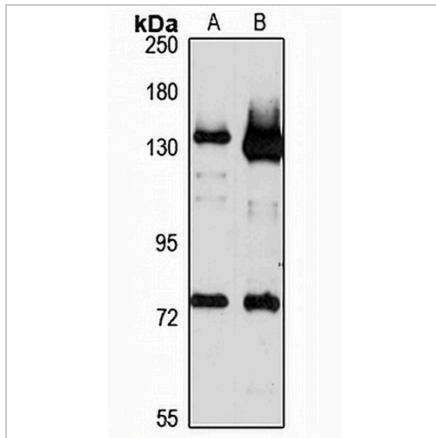
Description	Rabbit polyclonal antibody to MICAL1
Specificity	Recognizes endogenous levels of MICAL1 protein
Antibody Type	Primary antibody
Immunogen	Recombinant fusion protein of human MICAL1. The exact sequence is proprietary.
Purification	The antibody was purified by immunogen affinity chromatography.
Molecular Weight	Predicted: 37; Observed: 132 kD
Form/Buffer	Liquid in 0.42% Potassium phosphate, 0.87% Sodium chloride, pH 7.3, 30% glycerol, and 0.01% sodium azide.
Alternative Names	MICAL; NICAL; Protein-methionine sulfoxide oxidase MICAL1; Molecule interacting with CasL protein 1; MICAL-1; NEDD9-interacting protein with calponin homology and LIM domains
Gene Symbol	MICAL1
Entrez Gene	64780(Human); 171580(Mouse); 294520(Rat)
SwissProt	Q8TDZ2(Human); Q8VDP3(Mouse); D3ZBP4(Rat)

*AREX continuously optimizes our products. Webpage content may not reflect the latest updates. For inquiries, please contact info@arexbio.com or your local distributor.

*Clone Number, Reactivity, Source/Host and Clonality can be found in the product name and Key Features section above.

DATASHEET**MICAL1 Rabbit Polyclonal Antibody**

CAT. NO. APA16148

DATA

Western blot analysis of MICAL1 expression in HT29 (A), Raji (B) whole cell lysates.
(Predicted band size: 37; 108; 117; 119 kD; Observed band size: 132 kD)

STORAGE

Store at 4°C short term. For long term storage, store at -20°C, avoiding freeze/thaw cycles.

NOTE

For Research Use Only. Not for diagnostic, therapeutics, prophylactic or in vivo use.