

**DATASHEET**

**SMCR7L Rabbit Polyclonal Antibody**

CAT. NO. APA16150

**KEY FEATURES**

|               |   |               |                     |
|---------------|---|---------------|---------------------|
| Target        | SMCR7L  | Source / Host | Rabbit              |
| Reactivity    | Human, Mouse  | Clonality     | Polyclonal          |
| Applications  | WB  | Conjugation   | Unconjugated        |
| Form / Buffer | Liquid in 0.42% Potassium phosphate, 0.87% Sodium chloride, pH 7.3, 30% glycerol, and 0.01% sodium azide. |               | Storage<br>at -20°C |

**BACKGROUND**

Mitochondrial outer membrane protein which regulates mitochondrial fission/fusion dynamics . Promotes the recruitment and association of the fission mediator dynamin-related protein 1 (DNM1L) to the mitochondrial surface independently of the mitochondrial fission FIS1 and MFF proteins. Regulates DNM1L GTPase activity and DNM1L oligomerization. Binds ADP and can also bind GDP, although with lower affinity. Does not bind CDP, UDP, ATP, AMP or GTP. Inhibits DNM1L GTPase activity in the absence of bound ADP. Requires ADP to stimulate DNM1L GTPase activity and the assembly of DNM1L into long, oligomeric tubules with a spiral pattern, as opposed to the ring-like DNM1L oligomers observed in the absence of bound ADP. Does not require ADP for its function in recruiting DNM1L.

**APPLICATION**

To ensure optimal assay performance, AREX recommends conducting reagent titration tailored to each testing system for optimal detection results.

|    |                |
|----|----------------|
| WB | 1:500 - 1:2000 |
|----|----------------|

\*Results are sample-specific. Please refer to your local assay conditions and test parameters for reference.

**PRODUCT OVERVIEW**

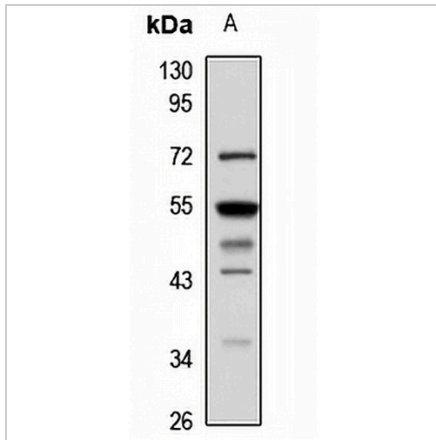
|                   |   |
|-------------------|---|
| Description       | Rabbit polyclonal antibody to SMCR7L  |
| Specificity       | Recognizes endogenous levels of SMCR7L protein  |
| Antibody Type     | Primary antibody  |
| Immunogen         | Recombinant fusion protein of human SMCR7L. The exact sequence is proprietary.  |
| Purification      | The antibody was purified by immunogen affinity chromatography.   |
| Molecular Weight  | Predicted: 8; Observed: 51 kD   |
| Form/Buffer       | Liquid in 0.42% Potassium phosphate, 0.87% Sodium chloride, pH 7.3, 30% glycerol, and 0.01% sodium azide.   |
| Alternative Names | MID51; SMCR7L; Mitochondrial dynamics protein MID51; Mitochondrial dynamics protein of 51 kDa; Mitochondrial elongation factor 1; Smith-Magenis syndrome chromosomal region candidate gene 7 protein-like; SMCR7-like protein |
| Gene Symbol       | MIEF1   |
| Entrez Gene       | 54471(Human); 239555(Mouse)   |
| SwissProt         | Q9NQG6(Human); Q8BGV8(Mouse)  |

\*AREX continuously optimizes our products. Webpage content may not reflect the latest updates. For inquiries, please contact [info@arexbio.com](mailto:info@arexbio.com) or your local distributor.

\*Clone Number, Reactivity, Source/Host and Clonality can be found in the product name and Key Features section above.

**DATASHEET****SMCR7L Rabbit Polyclonal Antibody**

CAT. NO. APA16150

**DATA**

Western blot analysis of SMCR7L expression in U87MG (A) whole cell lysates. (Predicted band size: 8; 15; 51 kD; Observed band size: 51 kD)

**STORAGE**

Store at 4°C short term. For long term storage, store at -20°C, avoiding freeze/thaw cycles.

**NOTE**

For Research Use Only. Not for diagnostic, therapeutics, prophylactic or in vivo use.