

**DATASHEET**

**MIS12 Rabbit Polyclonal Antibody**

CAT. NO. APA16153

**KEY FEATURES**

Target	MIS12	Source / Host	Rabbit
Reactivity	Human, Mouse, Rat	Clonality	Polyclonal
Applications	WB	Conjugation	Unconjugated
Form / Buffer	Liquid in 0.42% Potassium phosphate, 0.87% Sodium chloride, pH 7.3, 30% glycerol, and 0.01% sodium azide.		Storage at -20°C

**BACKGROUND**

Part of the MIS12 complex which is required for normal chromosome alignment and segregation and for kinetochore formation during mitosis . Essential for proper kinetochore microtubule attachments .

**APPLICATION**

To ensure optimal assay performance, AREX recommends conducting reagent titration tailored to each testing system for optimal detection results.

WB	1:500 - 1:2000
----	----------------

\*Results are sample-specific. Please refer to your local assay conditions and test parameters for reference.

**PRODUCT OVERVIEW**

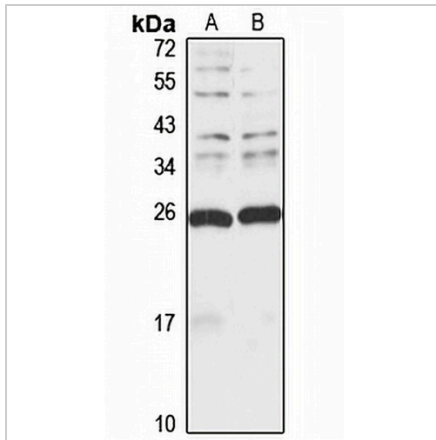
Description	Rabbit polyclonal antibody to MIS12
Specificity	Recognizes endogenous levels of MIS12 protein
Antibody Type	Primary antibody
Immunogen	Recombinant fusion protein of human MIS12. The exact sequence is proprietary.
Purification	The antibody was purified by immunogen affinity chromatography.
Molecular Weight	Predicted: 24 kD; Observed: 24 kD
Form/Buffer	Liquid in 0.42% Potassium phosphate, 0.87% Sodium chloride, pH 7.3, 30% glycerol, and 0.01% sodium azide.
Alternative Names	Protein MIS12 homolog
Gene Symbol	MIS12
Entrez Gene	79003(Human); 67139(Mouse); 501706(Rat)
SwissProt	Q9H081(Human); Q9CY25(Mouse); Q7TQ72(Rat)

\*AREX continuously optimizes our products. Webpage content may not reflect the latest updates. For inquiries, please contact [info@arexbio.com](mailto:info@arexbio.com) or your local distributor.

\*Clone Number, Reactivity, Source/Host and Clonality can be found in the product name and Key Features section above.

**DATASHEET****MIS12 Rabbit Polyclonal Antibody**

CAT. NO. APA16153

**DATA**

Western blot analysis of MIS12 expression in HeLa (A), LO2 (B) whole cell lysates.  
(Predicted band size: 24 kD; Observed band size: 24 kD)

**STORAGE**

Store at 4°C short term. For long term storage, store at -20°C, avoiding freeze/thaw cycles.

**NOTE**

For Research Use Only. Not for diagnostic, therapeutics, prophylactic or in vivo use.