

DATASHEET

MIXL Rabbit Polyclonal Antibody

CAT. NO. APA16154

KEY FEATURES

Target	MIXL	Source / Host	Rabbit
Reactivity	Human, Mouse	Clonality	Polyclonal
Applications	WB	Conjugation	Unconjugated
Form / Buffer	Liquid in 0.42% Potassium phosphate, 0.87% Sodium chloride, pH 7.3, 30% glycerol, and 0.01% sodium azide.		Storage at -20°C

BACKGROUND

Transcription factor that play a central role in proper axial mesendoderm morphogenesis and endoderm formation. Required for efficient differentiation of cells from the primitive streak stage to blood, by acting early in the recruitment and/or expansion of mesodermal progenitors to the hemangioblastic and hematopoietic lineages. Also involved in the morphogenesis of the heart and the gut during embryogenesis. Acts as a negative regulator of brachyury expression .

APPLICATION

To ensure optimal assay performance, AREX recommends conducting reagent titration tailored to each testing system for optimal detection results.

WB	1:500 - 1:1000
----	----------------

*Results are sample-specific. Please refer to your local assay conditions and test parameters for reference.

PRODUCT OVERVIEW

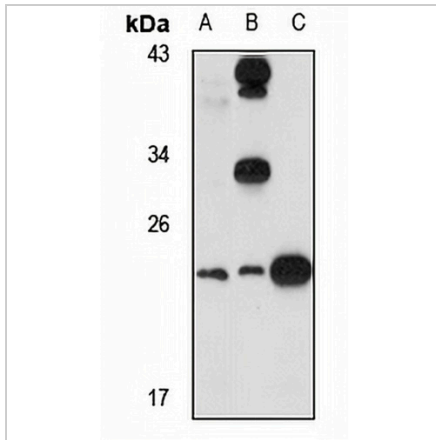
Description	Rabbit polyclonal antibody to MIXL
Specificity	Recognizes endogenous levels of MIXL protein
Antibody Type	Primary antibody
Immunogen	KLH-conjugated synthetic peptide of human MIXL. The exact sequence is proprietary.
Purification	The antibody was purified by immunogen affinity chromatography.
Molecular Weight	Predicted: 24 kD; Observed: 23 kD
Form/Buffer	Liquid in 0.42% Potassium phosphate, 0.87% Sodium chloride, pH 7.3, 30% glycerol, and 0.01% sodium azide.
Alternative Names	MIXL; Homeobox protein MIXL1; Homeodomain protein MIX; hMix; MIX1 homeobox-like protein 1; Mix.1 homeobox-like protein
Gene Symbol	MIXL1
Entrez Gene	83881(Human); 27217(Mouse)
SwissProt	Q9H2W2(Human); Q9WUI0(Mouse)

*AREX continuously optimizes our products. Webpage content may not reflect the latest updates. For inquiries, please contact info@arexbio.com or your local distributor.

*Clone Number, Reactivity, Source/Host and Clonality can be found in the product name and Key Features section above.

DATASHEET**MIXL Rabbit Polyclonal Antibody**

CAT. NO. APA16154

DATA

Western blot analysis of MIXL expression in Raji (A), mouse liver (B), rat pancreas (C) whole cell lysates. (Predicted band size: 24 kD; Observed band size: 23 kD)

STORAGE

Store at 4°C short term. For long term storage, store at -20°C, avoiding freeze/thaw cycles.

NOTE

For Research Use Only. Not for diagnostic, therapeutics, prophylactic or in vivo use.