

## DATASHEET

# BBS6 Rabbit Polyclonal Antibody

CAT. NO. APA16155

### KEY FEATURES

Target	BBS6	Source / Host	Rabbit
Reactivity	Human	Clonality	Polyclonal
Applications	WB	Conjugation	Unconjugated
Form / Buffer	Liquid in 0.42% Potassium phosphate, 0.87% Sodium chloride, pH 7.3, 30% glycerol, and 0.01% sodium azide.		Storage at -20°C

### BACKGROUND

Probable molecular chaperone that assists the folding of proteins upon ATP hydrolysis. Plays a role in the assembly of BBSome, a complex involved in ciliogenesis regulating transports vesicles to the cilia. May play a role in protein processing in limb, cardiac and reproductive system development. May play a role in cytokinesis.

### APPLICATION

To ensure optimal assay performance, AREX recommends conducting reagent titration tailored to each testing system for optimal detection results.

WB	1:500 - 1:2000
----	----------------

\*Results are sample-specific. Please refer to your local assay conditions and test parameters for reference.

### PRODUCT OVERVIEW

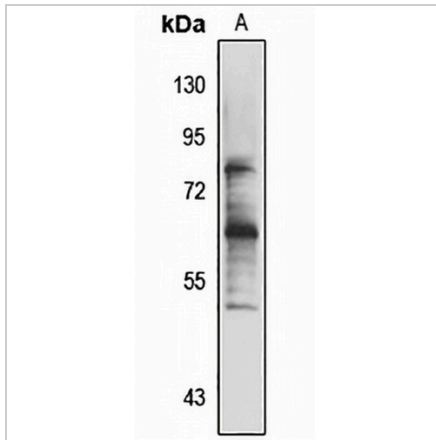
Description	Rabbit polyclonal antibody to BBS6
Specificity	Recognizes endogenous levels of BBS6 protein
Antibody Type	Primary antibody
Immunogen	Recombinant fusion protein of human BBS6. The exact sequence is proprietary.
Purification	The antibody was purified by immunogen affinity chromatography.
Molecular Weight	Predicted: 62 kD; Observed: 62 kD
Form/Buffer	Liquid in 0.42% Potassium phosphate, 0.87% Sodium chloride, pH 7.3, 30% glycerol, and 0.01% sodium azide.
Alternative Names	BBS6; McKusick-Kaufman/Bardet-Biedl syndromes putative chaperonin; Bardet-Biedl syndrome 6 protein
Gene Symbol	MKKS
Entrez Gene	8195(Human)
SwissProt	Q9NPJ1(Human)

\*AREX continuously optimizes our products. Webpage content may not reflect the latest updates. For inquiries, please contact [info@arexbio.com](mailto:info@arexbio.com) or your local distributor.

\*Clone Number, Reactivity, Source/Host and Clonality can be found in the product name and Key Features section above.

**DATASHEET****BBS6 Rabbit Polyclonal Antibody**

CAT. NO. APA16155

**DATA**

Western blot analysis of BBS6 expression in K562 (A) whole cell lysates. (Predicted band size: 62 kD; Observed band size: 62 kD)

**STORAGE**

Store at 4°C short term. For long term storage, store at -20°C, avoiding freeze/thaw cycles.

**NOTE**

For Research Use Only. Not for diagnostic, therapeutics, prophylactic or in vivo use.