

DATASHEET

MLC1 Rabbit Polyclonal Antibody

CAT. NO. APA16158

KEY FEATURES

Target	MLC1	Source / Host	Rabbit
Reactivity	Human	Clonality	Polyclonal
Applications	WB	Conjugation	Unconjugated
Form / Buffer	Liquid in 0.42% Potassium phosphate, 0.87% Sodium chloride, pH 7.3, 30% glycerol, and 0.01% sodium azide.		Storage at-20°C

BACKGROUND

Transmembrane protein mainly expressed in brain astrocytes that may play a role in transport across the blood-brain and brain-cerebrospinal fluid barriers . Regulates the response of astrocytes to hypo-osmosis by promoting calcium influx . May function as regulatory protein of membrane protein complexes such as ion channels (Probable).

APPLICATION

To ensure optimal assay performance, AREX recommends conducting reagent titration tailored to each testing system for optimal detection results.

WB	1:500 - 1:2000
----	----------------

*Results are sample-specific. Please refer to your local assay conditions and test parameters for reference.

PRODUCT OVERVIEW

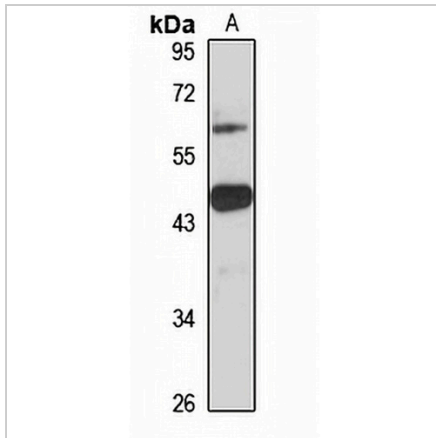
Description	Rabbit polyclonal antibody to MLC1
Specificity	Recognizes endogenous levels of MLC1 protein
Antibody Type	Primary antibody
Immunogen	KLH-conjugated synthetic peptide of human MLC1. The exact sequence is proprietary.
Purification	The antibody was purified by immunogen affinity chromatography.
Molecular Weight	Predicted: 37; Observed: 45 kD
Form/Buffer	Liquid in 0.42% Potassium phosphate, 0.87% Sodium chloride, pH 7.3, 30% glycerol, and 0.01% sodium azide.
Alternative Names	KIAA0027; WKL1; Membrane protein MLC1
Gene Symbol	MLC1
Entrez Gene	23209(Human)
SwissProt	Q15049(Human)

*AREX continuously optimizes our products. Webpage content may not reflect the latest updates. For inquiries, please contact info@arexbio.com or your local distributor.

*Clone Number, Reactivity, Source/Host and Clonality can be found in the product name and Key Features section above.

DATASHEET**MLC1 Rabbit Polyclonal Antibody**

CAT. NO. APA16158

DATA

Western blot analysis of MLC1 expression in SHSY5Y (A) whole cell lysates. (Predicted band size: 37; 41 kD; Observed band size: 45 kD)

STORAGE

Store at 4°C short term. For long term storage, store at -20°C, avoiding freeze/thaw cycles.

NOTE

For Research Use Only. Not for diagnostic, therapeutics, prophylactic or in vivo use.