

**DATASHEET**

**MLF2 Rabbit Polyclonal Antibody**

CAT. NO. APA16159

**KEY FEATURES**

Target	MLF2	Source / Host	Rabbit
Reactivity	Human, Mouse, Rat	Clonality	Polyclonal
Applications	WB, IHC	Conjugation	Unconjugated
Form / Buffer	Liquid in 0.42% Potassium phosphate, 0.87% Sodium chloride, pH 7.3, 30% glycerol, and 0.01% sodium azide.		Storage at -20°C

**BACKGROUND**

Myeloid leukemia factor 2 (MLF2), also known as Myelodysplasia-myeloid leukemia factor 2. Belongs to the MLF family  
Subcellular location: Cytoplasm; Nucleus Tissue specificity: Ubiquitously expressed

**APPLICATION**

To ensure optimal assay performance, AREX recommends conducting reagent titration tailored to each testing system for optimal detection results.

WB	1:500 - 1:2000
IHC	1:50 - 1:200

\*Results are sample-specific. Please refer to your local assay conditions and test parameters for reference.

**PRODUCT OVERVIEW**

Description	Rabbit polyclonal antibody to MLF2
Specificity	Recognizes endogenous levels of MLF2 protein
Antibody Type	Primary antibody
Immunogen	Recombinant fusion protein of human MLF2. The exact sequence is proprietary.
Purification	The antibody was purified by immunogen affinity chromatography.
Molecular Weight	Predicted: 28 kD; Observed: 28 kD
Form/Buffer	Liquid in 0.42% Potassium phosphate, 0.87% Sodium chloride, pH 7.3, 30% glycerol, and 0.01% sodium azide.
Alternative Names	Myeloid leukemia factor 2; Myelodysplasia-myeloid leukemia factor 2
Gene Symbol	MLF2
Entrez Gene	8079(Human); 30853(Mouse)
SwissProt	Q15773(Human); Q99KX1(Mouse)

\*AREX continuously optimizes our products. Webpage content may not reflect the latest updates. For inquiries, please contact [info@arexbio.com](mailto:info@arexbio.com) or your local distributor.

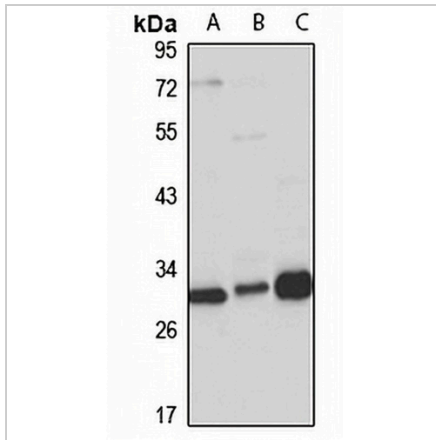
\*Clone Number, Reactivity, Source/Host and Clonality can be found in the product name and Key Features section above.

**DATASHEET**

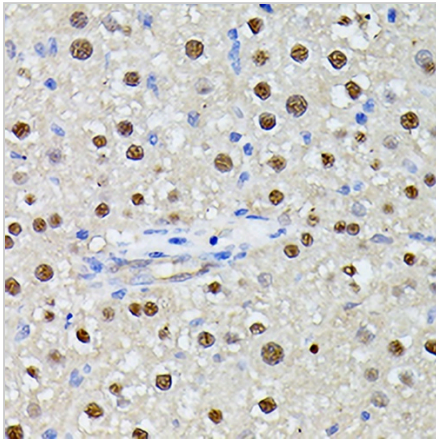
**MLF2 Rabbit Polyclonal Antibody**

CAT. NO. APA16159

**DATA**



Western blot analysis of MLF2 expression in K562 (A), mouse testis (B), rat brain (C) whole cell lysates. (Predicted band size: 28 kD; Observed band size: 28 kD)



Immunohistochemical analysis of MLF2 staining in rat liver formalin fixed paraffin embedded tissue section. The section was pre-treated using heat mediated antigen retrieval with sodium citrate buffer (pH 6.0). The section was then incubated with the antibody at room temperature and detected using an HRP conjugated compact polymer system. DAB was used as the chromogen. The section was then counterstained with haematoxylin and mounted with DPX.

**STORAGE**

Store at 4°C short term. For long term storage, store at -20°C, avoiding freeze/thaw cycles.

**NOTE**

For Research Use Only. Not for diagnostic, therapeutics, prophylactic or in vivo use.