

**DATASHEET**

**MMADHC Rabbit Polyclonal Antibody**

CAT. NO. APA16164

**KEY FEATURES**

Target	MMADHC	Source / Host	Rabbit
Reactivity	Human, Mouse, Rat	Clonality	Polyclonal
Applications	WB	Conjugation	Unconjugated
Form / Buffer	Liquid in 0.42% Potassium phosphate, 0.87% Sodium chloride, pH 7.3, 30% glycerol, and 0.01% sodium azide.		Storage at -20°C

**BACKGROUND**

Involved in cobalamin metabolism and trafficking . Plays a role in regulating the biosynthesis and the proportion of two coenzymes, methylcob(III)alamin (MeCbl) and 5'-deoxyadenosylcobalamin (AdoCbl) . Promotes oxidation of cob(II)alamin bound to MMACHC . The processing of cobalamin in the cytosol occurs in a multiprotein complex composed of at least MMACHC, MMADHC, MTRR (methionine synthase reductase) and MTR (methionine synthase) which may contribute to shuttle safely and efficiently cobalamin towards MTR in order to produce methionine .

**APPLICATION**

To ensure optimal assay performance, AREX recommends conducting reagent titration tailored to each testing system for optimal detection results.

WB	1:500 - 1:2000
----	----------------

\*Results are sample-specific. Please refer to your local assay conditions and test parameters for reference.

**PRODUCT OVERVIEW**

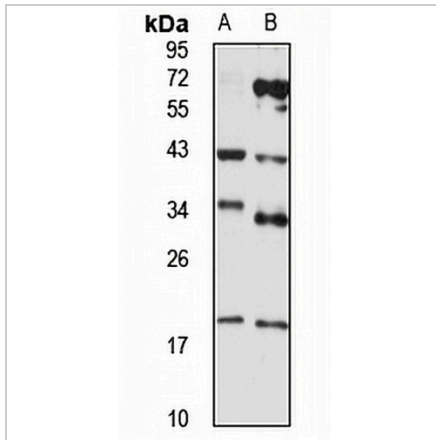
Description	Rabbit polyclonal antibody to MMADHC
Specificity	Recognizes endogenous levels of MMADHC protein
Antibody Type	Primary antibody
Immunogen	Recombinant fusion protein of human MMADHC. The exact sequence is proprietary.
Purification	The antibody was purified by immunogen affinity chromatography.
Molecular Weight	Predicted: 32 kD; Observed: 33 kD
Form/Buffer	Liquid in 0.42% Potassium phosphate, 0.87% Sodium chloride, pH 7.3, 30% glycerol, and 0.01% sodium azide.
Alternative Names	C2orf25; CL25022; Methylmalonic aciduria and homocystinuria type D protein mitochondrial
Gene Symbol	MMADHC
Entrez Gene	27249(Human); 109129(Mouse); 362134(Rat)
SwissProt	Q9H3L0(Human); Q99LS1(Mouse); Q6AYQ6(Rat)

\*AREX continuously optimizes our products. Webpage content may not reflect the latest updates. For inquiries, please contact [info@arexbio.com](mailto:info@arexbio.com) or your local distributor.

\*Clone Number, Reactivity, Source/Host and Clonality can be found in the product name and Key Features section above.

**DATASHEET****MMADHC Rabbit Polyclonal Antibody**

CAT. NO. APA16164

**DATA**

Western blot analysis of MMADHC expression in NIH3T3 (A), MCF7 (B) whole cell lysates. (Predicted band size: 32 kD; Observed band size: 33 kD)

**STORAGE**

Store at 4°C short term. For long term storage, store at -20°C, avoiding freeze/thaw cycles.

**NOTE**

For Research Use Only. Not for diagnostic, therapeutics, prophylactic or in vivo use.