

DATASHEET

MoCo Sulfurase Rabbit Polyclonal Antibody

CAT. NO. APA16169

KEY FEATURES

Target	MoCo Sulfurase	Source / Host	Rabbit
Reactivity	Human, Mouse	Clonality	Polyclonal
Applications	WB	Conjugation	Unconjugated
Form / Buffer	Liquid in 0.42% Potassium phosphate, 0.87% Sodium chloride, pH 7.3, 30% glycerol, and 0.01% sodium azide.		Storage at -20°C

BACKGROUND

Sulfurates the molybdenum cofactor . Sulfation of molybdenum is essential for xanthine dehydrogenase (XDH) and aldehyde oxidase (ADO) enzymes in which molybdenum cofactor is liganded by 1 oxygen and 1 sulfur atom in active form . In vitro, the C-terminal domain is able to reduce N-hydroxylated prodrugs, such as benzamidoxime .

APPLICATION

To ensure optimal assay performance, AREX recommends conducting reagent titration tailored to each testing system for optimal detection results.

WB	1:500 - 1:2000
----	----------------

*Results are sample-specific. Please refer to your local assay conditions and test parameters for reference.

PRODUCT OVERVIEW

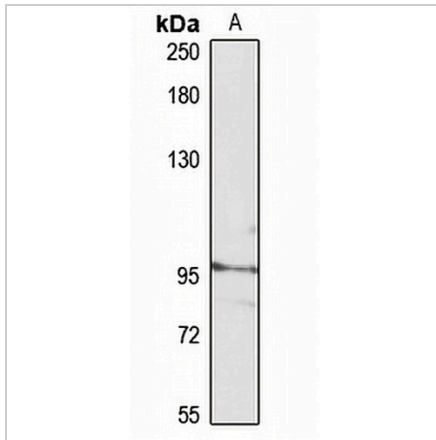
Description	Rabbit polyclonal antibody to MoCo Sulfurase
Specificity	Recognizes endogenous levels of MoCo Sulfurase protein
Antibody Type	Primary antibody
Immunogen	Recombinant fusion protein of human MoCo Sulfurase. The exact sequence is proprietary.
Purification	The antibody was purified by immunogen affinity chromatography.
Molecular Weight	Predicted: 98 kD; Observed: 98 kD
Form/Buffer	Liquid in 0.42% Potassium phosphate, 0.87% Sodium chloride, pH 7.3, 30% glycerol, and 0.01% sodium azide.
Alternative Names	Molybdenum cofactor sulfurase; MCS; MOS; MoCo sulfurase; hMCS; Molybdenum cofactor sulfurtransferase
Gene Symbol	MOCOS
Entrez Gene	55034(Human); 68591(Mouse)
SwissProt	Q96EN8(Human); Q14CH1(Mouse)

*AREX continuously optimizes our products. Webpage content may not reflect the latest updates. For inquiries, please contact info@arexbio.com or your local distributor.

*Clone Number, Reactivity, Source/Host and Clonality can be found in the product name and Key Features section above.

DATASHEET**MoCo Sulfurase Rabbit Polyclonal Antibody**

CAT. NO. APA16169

DATA

Western blot analysis of MoCo Sulfurase expression in HepG2 (A) whole cell lysates.
(Predicted band size: 98 kD; Observed band size: 98 kD)

STORAGE

Store at 4°C short term. For long term storage, store at -20°C, avoiding freeze/thaw cycles.

NOTE

For Research Use Only. Not for diagnostic, therapeutics, prophylactic or in vivo use.