

DATASHEET

MON1B Rabbit Polyclonal Antibody

CAT. NO. APA16171

KEY FEATURES

Target	MON1B	Source / Host	Rabbit
Reactivity	Human, Mouse	Clonality	Polyclonal
Applications	WB	Conjugation	Unconjugated
Form / Buffer	Liquid in 0.42% Potassium phosphate, 0.87% Sodium chloride, pH 7.3, 30% glycerol, and 0.01% sodium azide.		Storage at -20°C

BACKGROUND

Vacuolar fusion protein MON1 homolog B (MON1B), also known as HSV-1 stimulation-related gene 1 protein, HSV-I stimulating-related protein. Belongs to the MON1/SAND family Subunit: Interacts with CCNT2; down-regulates CCNT2-mediated activation of viral promoters during herpes simplex virus 1/HHV-1 infection , also known as HSV-1 stimulation-related gene 1 protein, HSV-I stimulating-related protein. Belongs to the MON1/SAND family Subunit: Interacts with CCNT2; down-regulates CCNT2-mediated activation of viral promoters during herpes simplex virus 1/HHV-1 infection . Found in a complex with RMC1, CCZ1 MON1A and MON1B Induction: Induced in fibroblast KMB17 cells by HSV-1

APPLICATION

To ensure optimal assay performance, AREX recommends conducting reagent titration tailored to each testing system for optimal detection results.

WB	1:500 - 1:2000
----	----------------

*Results are sample-specific. Please refer to your local assay conditions and test parameters for reference.

PRODUCT OVERVIEW

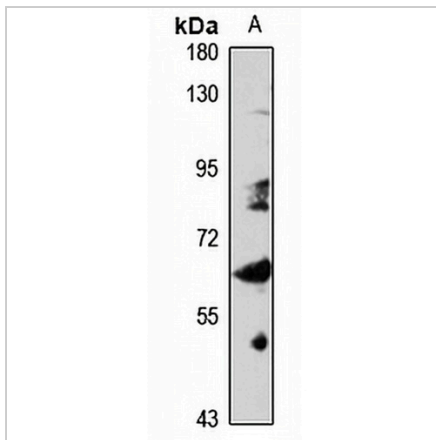
Description	Rabbit polyclonal antibody to MON1B
Specificity	Recognizes endogenous levels of MON1B protein
Antibody Type	Primary antibody
Immunogen	Recombinant fusion protein of human MON1B. The exact sequence is proprietary.
Purification	The antibody was purified by immunogen affinity chromatography.
Molecular Weight	Predicted: 59 kD; Observed: 59 kD
Form/Buffer	Liquid in 0.42% Potassium phosphate, 0.87% Sodium chloride, pH 7.3, 30% glycerol, and 0.01% sodium azide.
Alternative Names	HSRG1; KIAA0872; SAND2; Vacuolar fusion protein MON1 homolog B; HSV-1 stimulation-related gene 1 protein; HSV-I stimulating-related protein
Gene Symbol	MON1B
Entrez Gene	22879(Human)
SwissProt	Q7L1V2(Human)

*AREX continuously optimizes our products. Webpage content may not reflect the latest updates. For inquiries, please contact info@arexbio.com or your local distributor.

*Clone Number, Reactivity, Source/Host and Clonality can be found in the product name and Key Features section above.

DATASHEET**MON1B Rabbit Polyclonal Antibody**

CAT. NO. APA16171

DATA

Western blot analysis of MON1B expression in U87MG (A) whole cell lysates. (Predicted band size: 59 kD; Observed band size: 59 kD)

STORAGE

Store at 4°C short term. For long term storage, store at -20°C, avoiding freeze/thaw cycles.

NOTE

For Research Use Only. Not for diagnostic, therapeutics, prophylactic or in vivo use.