

DATASHEET

ZCWCC1 Rabbit Polyclonal Antibody

CAT. NO. APA16172

KEY FEATURES

Target	ZCWCC1	Source / Host	Rabbit
Reactivity	Human, Mouse, Rat	Clonality	Polyclonal
Applications	WB	Conjugation	Unconjugated
Form / Buffer	Liquid in 0.42% Potassium phosphate, 0.87% Sodium chloride, pH 7.3, 30% glycerol, and 0.01% sodium azide.		Storage at -20°C

BACKGROUND

ATP-dependent chromatin remodeler essential for epigenetic silencing by the HUSH (human silencing hub) complex complex . Recruited by HUSH to target site in heterochromatin, the ATPase activity and homodimerization are critical for HUSH-mediated silencing . Represses germ cell-related genes and L1 retrotransposons in collaboration with SETDB1 and the HUSH complex, the silencing is dependent of repressive epigenetic modifications, such as H3K9me3 mark. Silencing events often occur within introns of transcriptionally active genes, and lead to the down-regulation of host gene expression . During DNA damage response, regulates chromatin remodeling through ATP hydrolysis. Upon DNA damage, is phosphorylated by PAK1, both colocalize to chromatin and induce H2AX expression.

APPLICATION

To ensure optimal assay performance, AREX recommends conducting reagent titration tailored to each testing system for optimal detection results.

WB	1:500 - 1:2000
----	----------------

*Results are sample-specific. Please refer to your local assay conditions and test parameters for reference.

PRODUCT OVERVIEW

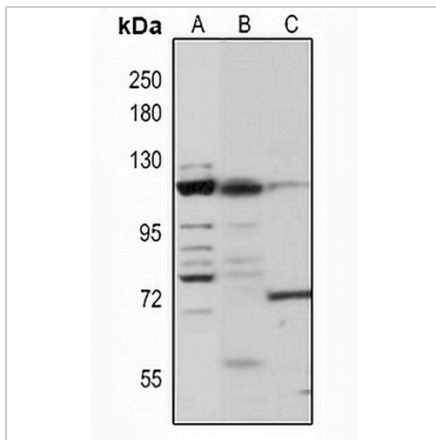
Description	Rabbit polyclonal antibody to ZCWCC1
Specificity	Recognizes endogenous levels of ZCWCC1 protein
Antibody Type	Primary antibody
Immunogen	Recombinant fusion protein of human ZCWCC1. The exact sequence is proprietary.
Purification	The antibody was purified by immunogen affinity chromatography.
Molecular Weight	Predicted: 117 kD; Observed: 118 kD
Form/Buffer	Liquid in 0.42% Potassium phosphate, 0.87% Sodium chloride, pH 7.3, 30% glycerol, and 0.01% sodium azide.
Alternative Names	KIAA0852; ZCWCC1; MORC family CW-type zinc finger protein 2; Zinc finger CW-type coiled-coil domain protein 1
Gene Symbol	MORC2
Entrez Gene	22880(Human)
SwissProt	Q9Y6X9(Human)

*AREX continuously optimizes our products. Webpage content may not reflect the latest updates. For inquiries, please contact info@arexbio.com or your local distributor.

*Clone Number, Reactivity, Source/Host and Clonality can be found in the product name and Key Features section above.

DATASHEET**ZCWCC1 Rabbit Polyclonal Antibody**

CAT. NO. APA16172

DATA

Western blot analysis of ZCWCC1 expression in HEK293T (A), mouse thymus (B), rat testis (C) whole cell lysates. (Predicted band size: 117 kD; Observed band size: 118 kD)

STORAGE

Store at 4°C short term. For long term storage, store at -20°C, avoiding freeze/thaw cycles.

NOTE

For Research Use Only. Not for diagnostic, therapeutics, prophylactic or in vivo use.