

## DATASHEET

# MPHOSPH6 Rabbit Polyclonal Antibody

CAT. NO. APA16177

### KEY FEATURES

Target	MPHOSPH6	Source / Host	Rabbit
Reactivity	Human, Mouse, Rat	Clonality	Polyclonal
Applications	WB	Conjugation	Unconjugated
Form / Buffer	Liquid in 0.42% Potassium phosphate, 0.87% Sodium chloride, pH 7.3, 30% glycerol, and 0.01% sodium azide.		Storage at -20°C

### BACKGROUND

RNA-binding protein that associates with the RNA exosome complex. Involved in the 3'-processing of the 7S pre-rRNA to the mature 5.8S rRNA and play a role in recruiting the RNA exosome complex to pre-rRNA; this function may include C1D.

### APPLICATION

To ensure optimal assay performance, AREX recommends conducting reagent titration tailored to each testing system for optimal detection results.

WB	1:500 - 1:2000
----	----------------

\*Results are sample-specific. Please refer to your local assay conditions and test parameters for reference.

### PRODUCT OVERVIEW

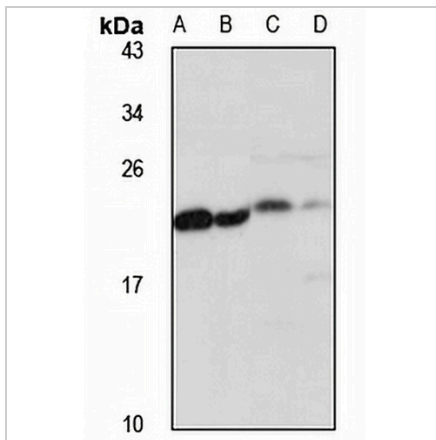
Description	Rabbit polyclonal antibody to MPHOSPH6
Specificity	Recognizes endogenous levels of MPHOSPH6 protein
Antibody Type	Primary antibody
Immunogen	Recombinant fusion protein of human MPHOSPH6. The exact sequence is proprietary.
Purification	The antibody was purified by immunogen affinity chromatography.
Molecular Weight	Predicted: 19 kD; Observed: 22; 23 kD
Form/Buffer	Liquid in 0.42% Potassium phosphate, 0.87% Sodium chloride, pH 7.3, 30% glycerol, and 0.01% sodium azide.
Alternative Names	MPP6; M-phase phosphoprotein 6
Gene Symbol	MPHOSPH6
Entrez Gene	10200(Human); 68533(Mouse)
SwissProt	Q99547(Human); Q9D1Q1(Mouse)

\*AREX continuously optimizes our products. Webpage content may not reflect the latest updates. For inquiries, please contact [info@arexbio.com](mailto:info@arexbio.com) or your local distributor.

\*Clone Number, Reactivity, Source/Host and Clonality can be found in the product name and Key Features section above.

**DATASHEET****MPHOSPH6 Rabbit Polyclonal Antibody**

CAT. NO. APA16177

**DATA**

Western blot analysis of MPHOSPH6 expression in HepG2 (A), Jurkat (B), mouse lung (C), rat brain (D) whole cell lysates. (Predicted band size: 19 kD; Observed band size: 22; 23 kD)

**STORAGE**

Store at 4°C short term. For long term storage, store at -20°C, avoiding freeze/thaw cycles.

**NOTE**

For Research Use Only. Not for diagnostic, therapeutics, prophylactic or in vivo use.