

**DATASHEET**

**MPPED1 Rabbit Polyclonal Antibody**

CAT. NO. APA16178

**KEY FEATURES**

Target	MPPED1	Source / Host	Rabbit
Reactivity	Human, Mouse, Rat	Clonality	Polyclonal
Applications	WB	Conjugation	Unconjugated
Form / Buffer	Liquid in 0.42% Potassium phosphate, 0.87% Sodium chloride, pH 7.3, 30% glycerol, and 0.01% sodium azide.		Storage at -20°C

**BACKGROUND**

May have metallophosphoesterase activity (in vitro).

**APPLICATION**

To ensure optimal assay performance, AREX recommends conducting reagent titration tailored to each testing system for optimal detection results.

WB	1:500 - 1:2000
----	----------------

\*Results are sample-specific. Please refer to your local assay conditions and test parameters for reference.

**PRODUCT OVERVIEW**

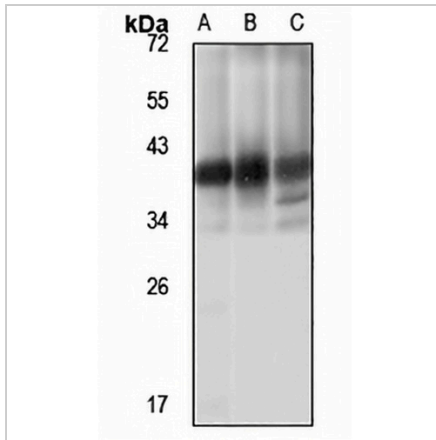
Description	Rabbit polyclonal antibody to MPPED1
Specificity	Recognizes endogenous levels of MPPED1 protein
Antibody Type	Primary antibody
Immunogen	Recombinant fusion protein of human MPPED1. The exact sequence is proprietary.
Purification	The antibody was purified by immunogen affinity chromatography.
Molecular Weight	Predicted: 37; Observed: 40 kD
Form/Buffer	Liquid in 0.42% Potassium phosphate, 0.87% Sodium chloride, pH 7.3, 30% glycerol, and 0.01% sodium azide.
Alternative Names	C22orf1; FAM1A; Metallophosphoesterase domain-containing protein 1; Adult brain protein 239; 239AB
Gene Symbol	MPPED1
Entrez Gene	758(Human); 223726(Mouse)
SwissProt	O15442(Human); Q91ZG2(Mouse)

\*AREX continuously optimizes our products. Webpage content may not reflect the latest updates. For inquiries, please contact [info@arexbio.com](mailto:info@arexbio.com) or your local distributor.

\*Clone Number, Reactivity, Source/Host and Clonality can be found in the product name and Key Features section above.

**DATASHEET****MPPED1 Rabbit Polyclonal Antibody**

CAT. NO. APA16178

**DATA**

Western blot analysis of MPPED1 expression in U87MG (A), mouse brain (B), rat brain (C) whole cell lysates. (Predicted band size: 37; 40 kD; Observed band size: 40 kD)

**STORAGE**

Store at 4°C short term. For long term storage, store at -20°C, avoiding freeze/thaw cycles.

**NOTE**

For Research Use Only. Not for diagnostic, therapeutics, prophylactic or in vivo use.