

**DATASHEET**

**MRI1 Rabbit Polyclonal Antibody**

CAT. NO. APA16181

**KEY FEATURES**

Target	MRI1	Source / Host	Rabbit
Reactivity	Human, Mouse, Rat	Clonality	Polyclonal
Applications	WB	Conjugation	Unconjugated
Form / Buffer	Liquid in 0.42% Potassium phosphate, 0.87% Sodium chloride, pH 7.3, 30% glycerol, and 0.01% sodium azide.		Storage at-20°C

**BACKGROUND**

Catalyzes the interconversion of methylthioribose-1-phosphate (MTR-1-P) into methylthioribulose-1-phosphate (MTRu-1-P). Independently from catalytic activity, promotes cell invasion in response to constitutive RhoA activation by promoting FAK tyrosine phosphorylation and stress fiber turnover.

**APPLICATION**

To ensure optimal assay performance, AREX recommends conducting reagent titration tailored to each testing system for optimal detection results.

WB	1:500 - 1:2000
----	----------------

\*Results are sample-specific. Please refer to your local assay conditions and test parameters for reference.

**PRODUCT OVERVIEW**

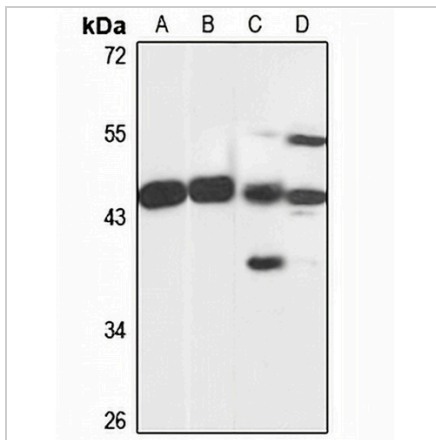
Description	Rabbit polyclonal antibody to MRI1
Specificity	Recognizes endogenous levels of MRI1 protein
Antibody Type	Primary antibody
Immunogen	Recombinant fusion protein of human MRI1. The exact sequence is proprietary.
Purification	The antibody was purified by immunogen affinity chromatography.
Molecular Weight	Predicted: 34; Observed: 45 kD
Form/Buffer	Liquid in 0.42% Potassium phosphate, 0.87% Sodium chloride, pH 7.3, 30% glycerol, and 0.01% sodium azide.
Alternative Names	MRDI; Methylthioribose-1-phosphate isomerase; M1Pi; MTR-1-P isomerase; Mediator of RhoA-dependent invasion; S-methyl-5-thioribose-1-phosphate isomerase; Translation initiation factor eIF-2B subunit alpha/beta/delta-like protein
Gene Symbol	MRI1
Entrez Gene	84245(Human); 67873(Mouse); 288912(Rat)
SwissProt	Q9BV20(Human); Q9CQT1(Mouse); Q5HZE4(Rat)

\*AREX continuously optimizes our products. Webpage content may not reflect the latest updates. For inquiries, please contact [info@arexbio.com](mailto:info@arexbio.com) or your local distributor.

\*Clone Number, Reactivity, Source/Host and Clonality can be found in the product name and Key Features section above.

**DATASHEET****MRI1 Rabbit Polyclonal Antibody**

CAT. NO. APA16181

**DATA**

Western blot analysis of MRI1 expression in HepG2 (A), HT1080 (B), mouse kidney (C), rat brain (D) whole cell lysates. (Predicted band size: 34; 39 kD; Observed band size: 45 kD)

**STORAGE**

Store at 4°C short term. For long term storage, store at -20°C, avoiding freeze/thaw cycles.

**NOTE**

For Research Use Only. Not for diagnostic, therapeutics, prophylactic or in vivo use.