

DATASHEET

MS4A12 Rabbit Polyclonal Antibody

CAT. NO. APA16190

KEY FEATURES

Target	MS4A12	Source / Host	Rabbit
Reactivity	Human	Clonality	Polyclonal
Applications	WB	Conjugation	Unconjugated
Form / Buffer	Liquid in 0.42% Potassium phosphate, 0.87% Sodium chloride, pH 7.3, 30% glycerol, and 0.01% sodium azide.		Storage at -20°C

BACKGROUND

May be involved in signal transduction as a component of a multimeric receptor complex.

APPLICATION

To ensure optimal assay performance, AREX recommends conducting reagent titration tailored to each testing system for optimal detection results.

WB	1:500 - 1:2000
----	----------------

*Results are sample-specific. Please refer to your local assay conditions and test parameters for reference.

PRODUCT OVERVIEW

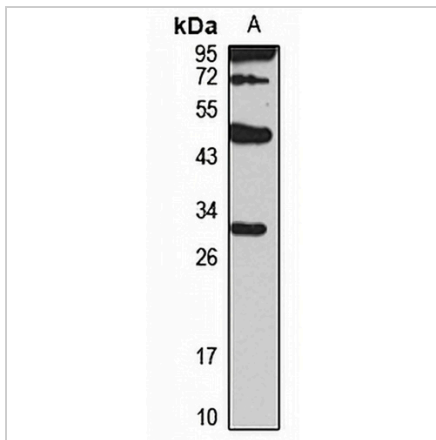
Description	Rabbit polyclonal antibody to MS4A12
Specificity	Recognizes endogenous levels of MS4A12 protein
Antibody Type	Primary antibody
Immunogen	Recombinant fusion protein of human MS4A12. The exact sequence is proprietary.
Purification	The antibody was purified by immunogen affinity chromatography.
Molecular Weight	Predicted: 23; Observed: 28 kD
Form/Buffer	Liquid in 0.42% Potassium phosphate, 0.87% Sodium chloride, pH 7.3, 30% glycerol, and 0.01% sodium azide.
Alternative Names	Membrane-spanning 4-domains subfamily A member 12
Gene Symbol	MS4A12
Entrez Gene	54860(Human)
SwissProt	Q9NXJ0(Human)

*AREX continuously optimizes our products. Webpage content may not reflect the latest updates. For inquiries, please contact info@arexbio.com or your local distributor.

*Clone Number, Reactivity, Source/Host and Clonality can be found in the product name and Key Features section above.

DATASHEET**MS4A12 Rabbit Polyclonal Antibody**

CAT. NO. APA16190

DATA

Western blot analysis of MS4A12 expression in HeLa (A) whole cell lysates. (Predicted band size: 23; 28 kD; Observed band size: 28 kD)

STORAGE

Store at 4°C short term. For long term storage, store at -20°C, avoiding freeze/thaw cycles.

NOTE

For Research Use Only. Not for diagnostic, therapeutics, prophylactic or in vivo use.