

## DATASHEET

# MSL-1 Rabbit Polyclonal Antibody

CAT. NO. APA16193

### KEY FEATURES

Target	MSL-1	Source / Host	Rabbit
Reactivity	Human, Rat	Clonality	Polyclonal
Applications	WB	Conjugation	Unconjugated
Form / Buffer	Liquid in 0.42% Potassium phosphate, 0.87% Sodium chloride, pH 7.3, 30% glycerol, and 0.01% sodium azide.		Storage at-20°C

### BACKGROUND

Non-catalytic component of the MSL histone acetyltransferase complex, a multiprotein complex that mediates the majority of histone H4 acetylation at 'Lys-16' (H4K16ac), an epigenetic mark that prevents chromatin compaction, an epigenetic mark that prevents chromatin compaction. The MSL complex is required for chromosome stability and genome integrity by maintaining homeostatic levels of H4K16ac. The MSL complex is also involved in gene dosage by promoting up-regulation of genes expressed by the X chromosome. X up-regulation is required to compensate for autosomal biallelic expression. The MSL complex also participates in gene dosage compensation by promoting expression of Tsix non-coding RNA.

### APPLICATION

To ensure optimal assay performance, AREX recommends conducting reagent titration tailored to each testing system for optimal detection results.

WB	1:500 - 1:2000
----	----------------

\*Results are sample-specific. Please refer to your local assay conditions and test parameters for reference.

### PRODUCT OVERVIEW

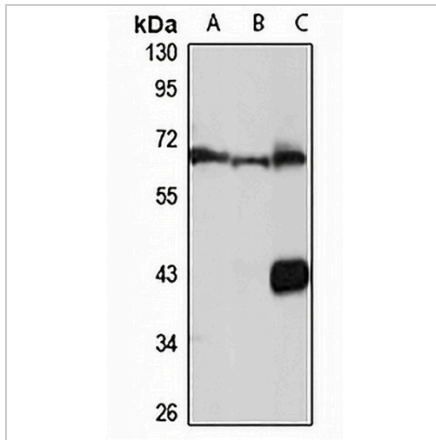
Description	Rabbit polyclonal antibody to MSL-1
Specificity	Recognizes endogenous levels of MSL-1 protein
Antibody Type	Primary antibody
Immunogen	Recombinant fusion protein of human MSL-1. The exact sequence is proprietary.
Purification	The antibody was purified by immunogen affinity chromatography.
Molecular Weight	Predicted: 67 kD; Observed: 67 kD
Form/Buffer	Liquid in 0.42% Potassium phosphate, 0.87% Sodium chloride, pH 7.3, 30% glycerol, and 0.01% sodium azide.
Alternative Names	MSL1L1; Male-specific lethal 1 homolog; MSL-1; Male-specific lethal 1-like 1; MSL1-like 1; Male-specific lethal-1 homolog 1
Gene Symbol	MSL1
Entrez Gene	339287(Human)
SwissProt	Q68DK7(Human)

\*AREX continuously optimizes our products. Webpage content may not reflect the latest updates. For inquiries, please contact [info@arexbio.com](mailto:info@arexbio.com) or your local distributor.

\*Clone Number, Reactivity, Source/Host and Clonality can be found in the product name and Key Features section above.

**DATASHEET****MSL-1 Rabbit Polyclonal Antibody**

CAT. NO. APA16193

**DATA**

Western blot analysis of MSL-1 expression in K562 (A), mouse testis (B), rat brain (C) whole cell lysates. (Predicted band size: 67 kD; Observed band size: 67 kD)

**STORAGE**

Store at 4°C short term. For long term storage, store at -20°C, avoiding freeze/thaw cycles.

**NOTE**

For Research Use Only. Not for diagnostic, therapeutics, prophylactic or in vivo use.