

DATASHEET

Mesothelin Rabbit Polyclonal Antibody

CAT. NO. APA16195

KEY FEATURES

Target	Mesothelin	Source / Host	Rabbit
Reactivity	Human, Mouse, Rat	Clonality	Polyclonal
Applications	WB, IHC	Conjugation	Unconjugated
Form / Buffer	Liquid in 0.42% Potassium phosphate, 0.87% Sodium chloride, pH 7.3, 30% glycerol, and 0.01% sodium azide.		Storage at -20°C

BACKGROUND

Membrane-anchored forms may play a role in cellular adhesion.; Megakaryocyte-potentiating factor (MPF) potentiates megakaryocyte colony formation in vitro.

APPLICATION

To ensure optimal assay performance, AREX recommends conducting reagent titration tailored to each testing system for optimal detection results.

WB	1:500 - 1:1000
IHC	1:50 - 1:200

*Results are sample-specific. Please refer to your local assay conditions and test parameters for reference.

PRODUCT OVERVIEW

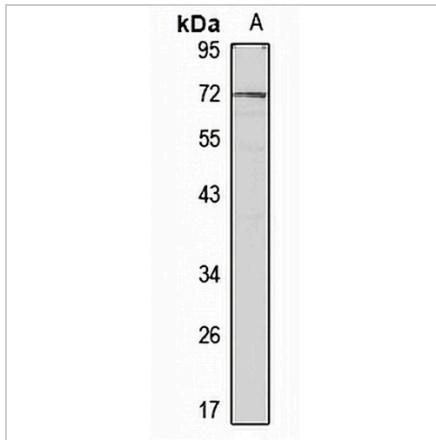
Description	Rabbit polyclonal antibody to Mesothelin
Specificity	Recognizes endogenous levels of Mesothelin protein
Antibody Type	Primary antibody
Immunogen	Recombinant fusion protein of human Mesothelin. The exact sequence is proprietary.
Purification	The antibody was purified by immunogen affinity chromatography.
Molecular Weight	Predicted: 67; Observed: 70 kD
Form/Buffer	Liquid in 0.42% Potassium phosphate, 0.87% Sodium chloride, pH 7.3, 30% glycerol, and 0.01% sodium azide.
Alternative Names	MPF; Mesothelin; CAK1 antigen; Pre-pro-megakaryocyte-potentiating factor
Gene Symbol	MSLN
Entrez Gene	10232(Human); 56047(Mouse); 60333(Rat)
SwissProt	Q13421(Human); Q61468(Mouse); Q9ERA7(Rat)

*AREX continuously optimizes our products. Webpage content may not reflect the latest updates. For inquiries, please contact info@arexbio.com or your local distributor.

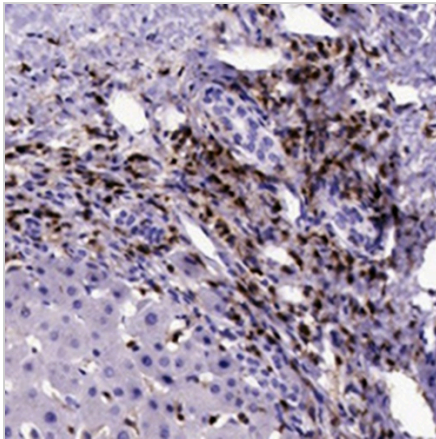
*Clone Number, Reactivity, Source/Host and Clonality can be found in the product name and Key Features section above.

DATASHEET**Mesothelin Rabbit Polyclonal Antibody**

CAT. NO. APA16195

DATA

Western blot analysis of Mesothelin expression in HEK293T (A) whole cell lysates.
(Predicted band size: 67; 68; 71 kD; Observed band size: 70 kD)



Immunohistochemical analysis of Mesothelin staining in human liver cancer formalin fixed paraffin embedded tissue section. The section was pre-treated using heat mediated antigen retrieval with sodium citrate buffer (pH 6.0). The section was then incubated with the antibody at room temperature and detected using an HRP conjugated compact polymer system. DAB was used as the chromogen. The section was then counterstained with haematoxylin and mounted with DPX.

STORAGE

Store at 4°C short term. For long term storage, store at -20°C, avoiding freeze/thaw cycles.

NOTE

For Research Use Only. Not for diagnostic, therapeutics, prophylactic or in vivo use.