

DATASHEET

MSRB1 Rabbit Polyclonal Antibody

CAT. NO. APA16196

KEY FEATURES

Target	MSRB1	Source / Host	Rabbit
Reactivity	Human, Mouse, Rat	Clonality	Polyclonal
Applications	WB, IF/ICC	Conjugation	Unconjugated
Form / Buffer	Liquid in 0.42% Potassium phosphate, 0.87% Sodium chloride, pH 7.3, 30% glycerol, and 0.01% sodium azide.		Storage at -20°C

BACKGROUND

Methionine-sulfoxide reductase that specifically reduces methionine (R)-sulfoxide back to methionine. While in many cases, methionine oxidation is the result of random oxidation following oxidative stress, methionine oxidation is also a post-translational modification that takes place on specific residue. Acts as a regulator of actin assembly by reducing methionine (R)-sulfoxide mediated by MICALs (MICAL1, MICAL2 or MICAL3) on actin, thereby promoting filament repolymerization. Plays a role in innate immunity by reducing oxidized actin, leading to actin repolymerization in macrophages.

APPLICATION

To ensure optimal assay performance, AREX recommends conducting reagent titration tailored to each testing system for optimal detection results.

WB	1:500 - 1:2000
IF/ICC	1:50 - 1:200

*Results are sample-specific. Please refer to your local assay conditions and test parameters for reference.

PRODUCT OVERVIEW

Description	Rabbit polyclonal antibody to MSRB1
Specificity	Recognizes endogenous levels of MSRB1 protein
Antibody Type	Primary antibody
Immunogen	Recombinant fusion protein of human MSRB1. The exact sequence is proprietary.
Purification	The antibody was purified by immunogen affinity chromatography.
Molecular Weight	Predicted: 12 kD; Observed: 13 kD
Form/Buffer	Liquid in 0.42% Potassium phosphate, 0.87% Sodium chloride, pH 7.3, 30% glycerol, and 0.01% sodium azide.
Alternative Names	SEPX1; Methionine-R-sulfoxide reductase B1; MsrB1; Selenoprotein X; SelX
Gene Symbol	MSRB1
Entrez Gene	51734(Human); 27361(Mouse); 685059(Rat)
SwissProt	Q9NZV6(Human); Q9JLC3(Mouse); Q52KJ8(Rat)

*AREX continuously optimizes our products. Webpage content may not reflect the latest updates. For inquiries, please contact info@arexbio.com or your local distributor.

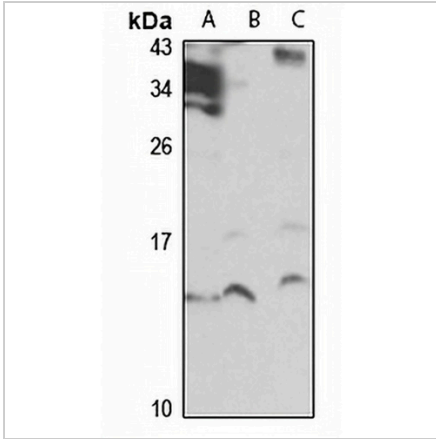
*Clone Number, Reactivity, Source/Host and Clonality can be found in the product name and Key Features section above.

DATASHEET

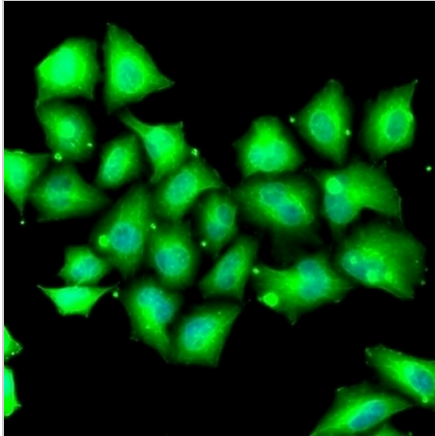
MSRB1 Rabbit Polyclonal Antibody

CAT. NO. APA16196

DATA



Western blot analysis of MSRB1 expression in HL60 (A), mouse kidney (B), rat brain (C) whole cell lysates. (Predicted band size: 12 kD; Observed band size: 13 kD)



Immunofluorescent analysis of MSRB1 staining in HeLa cells. Formalin-fixed cells were permeabilized with 0.1% Triton X-100 in TBS for 5-10 minutes and blocked with 3% BSA-PBS for 30 minutes at room temperature. Cells were probed with the primary antibody in 3% BSA-PBS and incubated overnight at 4 °C in a humidified chamber. Cells were washed with PBST and incubated with a Alexa Fluor 488-conjugated secondary antibody (green) in PBS at room temperature in the dark.

STORAGE

Store at 4°C short term. For long term storage, store at -20°C, avoiding freeze/thaw cycles.

NOTE

For Research Use Only. Not for diagnostic, therapeutics, prophylactic or in vivo use.