

**DATASHEET**

**MIMP Rabbit Polyclonal Antibody**

CAT. NO. APA16200

**KEY FEATURES**

Target	MIMP	Source / Host	Rabbit
Reactivity	Human, Mouse	Clonality	Polyclonal
Applications	WB, IHC, IF/ICC	Conjugation	Unconjugated
Form / Buffer	Liquid in 0.42% Potassium phosphate, 0.87% Sodium chloride, pH 7.3, 30% glycerol, and 0.01% sodium azide.		Storage at -20°C

**BACKGROUND**

Protein insertase that mediates insertion of transmembrane proteins into the mitochondrial outer membrane . Catalyzes insertion of proteins with alpha-helical transmembrane regions, such as signal-anchored, tail-anchored and multi-pass membrane proteins . Does not mediate insertion of beta-barrel transmembrane proteins . Also acts as a receptor for the truncated form of pro-apoptotic BH3-interacting domain death agonist (p15 BID) and has therefore a critical function in apoptosis . Regulates the quiescence/cycling of hematopoietic stem cells (HSCs) . Acts as a regulator of mitochondrial fusion, essential for the naive-to-primed interconversion of embryonic stem cells (ESCs) . Acts as a regulator of lipid homeostasis and has a regulatory role in adipocyte differentiation and biology .

**APPLICATION**

To ensure optimal assay performance, AREX recommends conducting reagent titration tailored to each testing system for optimal detection results.

WB	1:500 - 1:2000
IHC	1:50 - 1:200
IF/ICC	1:50 - 1:200

\*Results are sample-specific. Please refer to your local assay conditions and test parameters for reference.

**PRODUCT OVERVIEW**

Description	Rabbit polyclonal antibody to MIMP
Specificity	Recognizes endogenous levels of MIMP protein
Antibody Type	Primary antibody
Immunogen	Recombinant fusion protein of human MIMP. The exact sequence is proprietary.
Purification	The antibody was purified by immunogen affinity chromatography.
Molecular Weight	Predicted: 33 kD; Observed: 33 kD
Form/Buffer	Liquid in 0.42% Potassium phosphate, 0.87% Sodium chloride, pH 7.3, 30% glycerol, and 0.01% sodium azide.
Alternative Names	MIMP; Mitochondrial carrier homolog 2; Met-induced mitochondrial protein
Gene Symbol	MTCH2
Entrez Gene	23788(Human); 56428(Mouse)
SwissProt	Q9Y6C9(Human); Q791V5(Mouse)

\*AREX continuously optimizes our products. Webpage content may not reflect the latest updates. For inquiries, please contact [info@arexbio.com](mailto:info@arexbio.com) or your local distributor.

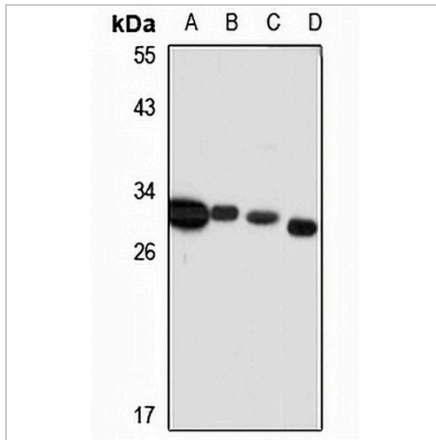
\*Clone Number, Reactivity, Source/Host and Clonality can be found in the product name and Key Features section above.

**DATASHEET**

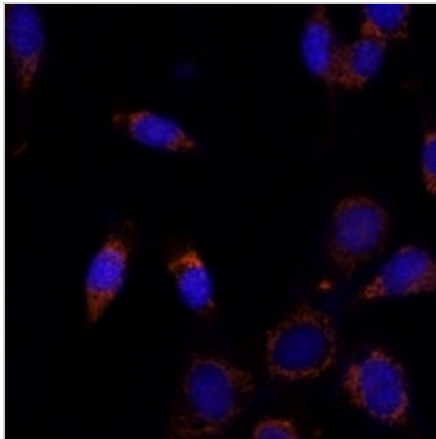
**MIMP Rabbit Polyclonal Antibody**

CAT. NO. APA16200

**DATA**



Western blot analysis of MIMP expression in HeLa (A), HEK293T (B), mouse brain (C), mouse liver (D) whole cell lysates. (Predicted band size: 33 kD; Observed band size: 33 kD)



Immunofluorescent analysis of MIMP staining in U2OS cells. Formalin-fixed cells were permeabilized with 0.1% Triton X-100 in TBS for 5-10 minutes and blocked with 3% BSA-PBS for 30 minutes at room temperature. Cells were probed with the primary antibody in 3% BSA-PBS and incubated overnight at 4 °C in a humidified chamber. Cells were washed with PBST and incubated with a Alexa Fluor 594-conjugated secondary antibody (red) in PBS at room temperature in the dark.

**STORAGE**

Store at 4°C short term. For long term storage, store at -20°C, avoiding freeze/thaw cycles.

**NOTE**

For Research Use Only. Not for diagnostic, therapeutics, prophylactic or in vivo use.