

DATASHEET

Cytochrome b Rabbit Polyclonal Antibody

CAT. NO. APA16202

KEY FEATURES

Target	Cytochrome b	Source / Host	Rabbit
Reactivity	Human, Mouse, Rat	Clonality	Polyclonal
Applications	WB	Conjugation	Unconjugated
Form / Buffer	Liquid in 0.42% Potassium phosphate, 0.87% Sodium chloride, pH 7.3, 30% glycerol, and 0.01% sodium azide.		Storage at -20°C

BACKGROUND

Component of the ubiquinol-cytochrome c reductase complex (complex III or cytochrome b-c1 complex) that is part of the mitochondrial respiratory chain. The b-c1 complex mediates electron transfer from ubiquinol to cytochrome c. Contributes to the generation of a proton gradient across the mitochondrial membrane that is then used for ATP synthesis.

APPLICATION

To ensure optimal assay performance, AREX recommends conducting reagent titration tailored to each testing system for optimal detection results.

WB	1:500 - 1:2000
----	----------------

*Results are sample-specific. Please refer to your local assay conditions and test parameters for reference.

PRODUCT OVERVIEW

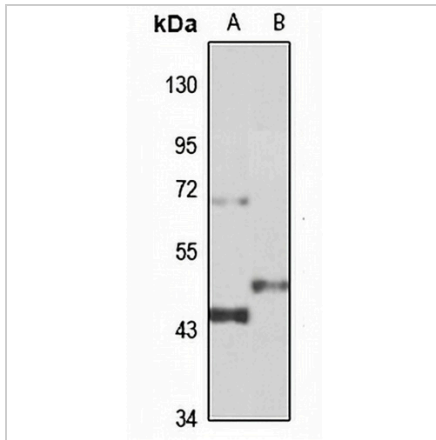
Description	Rabbit polyclonal antibody to Cytochrome b
Specificity	Recognizes endogenous levels of Cytochrome b protein
Antibody Type	Primary antibody
Immunogen	KLH-conjugated synthetic peptide of human Cytochrome b. The exact sequence is proprietary.
Purification	The antibody was purified by immunogen affinity chromatography.
Molecular Weight	Predicted: 43 kD; Observed: 43 kD
Form/Buffer	Liquid in 0.42% Potassium phosphate, 0.87% Sodium chloride, pH 7.3, 30% glycerol, and 0.01% sodium azide.
Alternative Names	COB; CYTB; MTCYB; Cytochrome b; Complex III subunit 3; Complex III subunit III; Cytochrome b-c1 complex subunit 3; Ubiquinol-cytochrome-c reductase complex cytochrome b subunit
Gene Symbol	MT-CYB
Entrez Gene	4519(Human); 17711(Mouse)
SwissProt	P00156(Human); P00158(Mouse); P00159(Rat)

*AREX continuously optimizes our products. Webpage content may not reflect the latest updates. For inquiries, please contact info@arexbio.com or your local distributor.

*Clone Number, Reactivity, Source/Host and Clonality can be found in the product name and Key Features section above.

DATASHEET**Cytochrome b Rabbit Polyclonal Antibody**

CAT. NO. APA16202

DATA

Western blot analysis of Cytochrome b expression in Raji (A), rat testis (B) whole cell lysates. (Predicted band size: 43 kD; Observed band size: 43 kD)

STORAGE

Store at 4°C short term. For long term storage, store at -20°C, avoiding freeze/thaw cycles.

NOTE

For Research Use Only. Not for diagnostic, therapeutics, prophylactic or in vivo use.