

DATASHEET

MTO1 Rabbit Polyclonal Antibody

CAT. NO. APA16212

KEY FEATURES

Target	MTO1	Source / Host	Rabbit
Reactivity	Human, Mouse	Clonality	Polyclonal
Applications	WB	Conjugation	Unconjugated
Form / Buffer	Liquid in 0.42% Potassium phosphate, 0.87% Sodium chloride, pH 7.3, 30% glycerol, and 0.01% sodium azide.		Storage at -20°C

BACKGROUND

Component of the GTPBP3-MTO1 complex that catalyzes the 5-taurinomethyluridine (taum(5)U) modification at the 34th wobble position (U34) of mitochondrial tRNAs (mt-tRNAs), which plays a role in mt-tRNA decoding and mitochondrial translation U) modification at the 34th wobble position (U34) of mitochondrial tRNAs (mt-tRNAs), which plays a role in mt-tRNA decoding and mitochondrial translation . Taum(5)U formation on mammalian mt-tRNA requires the presence of both GTPBP3-mediated GTPase activity and MTO1 catalytic activity .

APPLICATION

To ensure optimal assay performance, AREX recommends conducting reagent titration tailored to each testing system for optimal detection results.

WB	1:500 - 1:2000
----	----------------

*Results are sample-specific. Please refer to your local assay conditions and test parameters for reference.

PRODUCT OVERVIEW

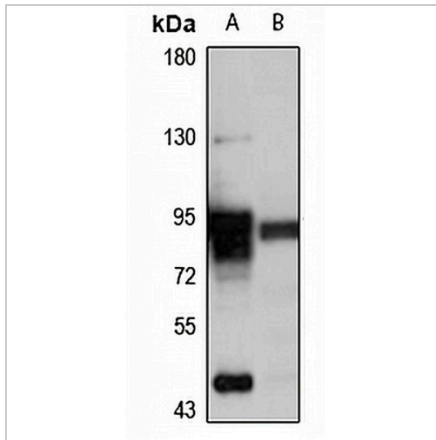
Description	Rabbit polyclonal antibody to MTO1
Specificity	Recognizes endogenous levels of MTO1 protein
Antibody Type	Primary antibody
Immunogen	Recombinant fusion protein of human MTO1. The exact sequence is proprietary.
Purification	The antibody was purified by immunogen affinity chromatography.
Molecular Weight	Predicted: 34; Observed: 80 kD
Form/Buffer	Liquid in 0.42% Potassium phosphate, 0.87% Sodium chloride, pH 7.3, 30% glycerol, and 0.01% sodium azide.
Alternative Names	Protein MTO1 homolog mitochondrial
Gene Symbol	MTO1
Entrez Gene	25821(Human); 68291(Mouse)
SwissProt	Q9Y2Z2(Human); Q923Z3(Mouse)

*AREX continuously optimizes our products. Webpage content may not reflect the latest updates. For inquiries, please contact info@arexbio.com or your local distributor.

*Clone Number, Reactivity, Source/Host and Clonality can be found in the product name and Key Features section above.

DATASHEET**MTO1 Rabbit Polyclonal Antibody**

CAT. NO. APA16212

DATA

Western blot analysis of MTO1 expression in HeLa (A), mouse kidney (B) whole cell lysates. (Predicted band size: 34; 66; 72; 77; 79; 81 kD; Observed band size: 80 kD)

STORAGE

Store at 4°C short term. For long term storage, store at -20°C, avoiding freeze/thaw cycles.

NOTE

For Research Use Only. Not for diagnostic, therapeutics, prophylactic or in vivo use.