

DATASHEET

PAPD1 Rabbit Polyclonal Antibody

CAT. NO. APA16213

KEY FEATURES

Target	PAPD1	Source / Host	Rabbit
Reactivity	Human, Mouse	Clonality	Polyclonal
Applications	WB	Conjugation	Unconjugated
Form / Buffer	Liquid in 0.42% Potassium phosphate, 0.87% Sodium chloride, pH 7.3, 30% glycerol, and 0.01% sodium azide.		Storage at -20°C

BACKGROUND

Polymerase that creates the 3' poly(A) tail of mitochondrial transcripts. Can use all four nucleotides, but has higher activity with ATP and UTP (in vitro). Plays a role in replication-dependent histone mRNA degradation. May be involved in the terminal uridylation of mature histone mRNAs before their degradation is initiated. Might be responsible for the creation of some UAA stop codons which are not encoded in mtDNA.

APPLICATION

To ensure optimal assay performance, AREX recommends conducting reagent titration tailored to each testing system for optimal detection results.

WB	1:500 - 1:2000
----	----------------

*Results are sample-specific. Please refer to your local assay conditions and test parameters for reference.

PRODUCT OVERVIEW

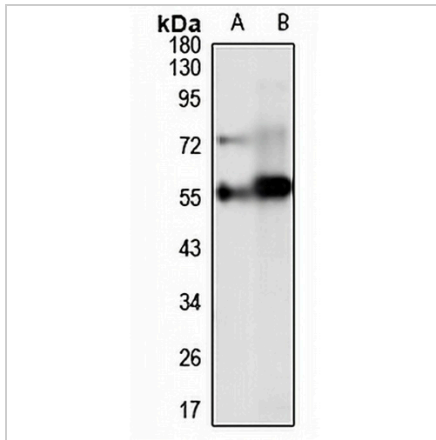
Description	Rabbit polyclonal antibody to PAPD1
Specificity	Recognizes endogenous levels of PAPD1 protein
Antibody Type	Primary antibody
Immunogen	Recombinant fusion protein of human PAPD1. The exact sequence is proprietary.
Purification	The antibody was purified by immunogen affinity chromatography.
Molecular Weight	Predicted: 66 kD; Observed: 58 kD
Form/Buffer	Liquid in 0.42% Potassium phosphate, 0.87% Sodium chloride, pH 7.3, 30% glycerol, and 0.01% sodium azide.
Alternative Names	PAPD1; Poly(A) RNA polymerase mitochondrial; PAP; PAP-associated domain-containing protein 1; Polynucleotide adenylyltransferase; Terminal uridylyltransferase 1; TUTase 1; mtPAP
Gene Symbol	MTPAP
Entrez Gene	55149(Human); 67440(Mouse)
SwissProt	Q9NVV4(Human); Q9D0D3(Mouse)

*AREX continuously optimizes our products. Webpage content may not reflect the latest updates. For inquiries, please contact info@arexbio.com or your local distributor.

*Clone Number, Reactivity, Source/Host and Clonality can be found in the product name and Key Features section above.

DATASHEET**PAPD1 Rabbit Polyclonal Antibody**

CAT. NO. APA16213

DATA

Western blot analysis of PAPD1 expression in Jurkat (A), mouse spleen (B) whole cell lysates. (Predicted band size: 66 kD; Observed band size: 58 kD)

STORAGE

Store at 4°C short term. For long term storage, store at -20°C, avoiding freeze/thaw cycles.

NOTE

For Research Use Only. Not for diagnostic, therapeutics, prophylactic or in vivo use.