

**DATASHEET**

**MULAN Rabbit Polyclonal Antibody**

CAT. NO. APA16218

**KEY FEATURES**

Target	MULAN	Source / Host	Rabbit
Reactivity	Human, Mouse	Clonality	Polyclonal
Applications	WB	Conjugation	Unconjugated
Form / Buffer	Liquid in 0.42% Potassium phosphate, 0.87% Sodium chloride, pH 7.3, 30% glycerol, and 0.01% sodium azide.		Storage at -20°C

**BACKGROUND**

Exhibits weak E3 ubiquitin-protein ligase activity . E3 ubiquitin ligases accept ubiquitin from an E2 ubiquitin-conjugating enzyme in the form of a thioester and then directly transfer the ubiquitin to targeted substrates . Can ubiquitinate AKT1 preferentially at 'Lys-284' involving 'Lys-48'-linked polyubiquitination and seems to be involved in regulation of Akt signaling by targeting phosphorylated Akt to proteasomal degradation . Mediates polyubiquitination of cytoplasmic TP53 at 'Lys-24' which targets TP53 for proteasomal degradation, thus reducing TP53 levels in the cytoplasm and mitochondrion . Proposed to preferentially act as a SUMO E3 ligase at physiological concentrations .

**APPLICATION**

To ensure optimal assay performance, AREX recommends conducting reagent titration tailored to each testing system for optimal detection results.

WB	1:500 - 1:1000
----	----------------

\*Results are sample-specific. Please refer to your local assay conditions and test parameters for reference.

**PRODUCT OVERVIEW**

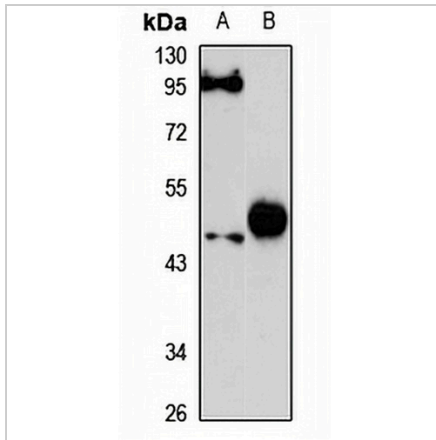
Description	Rabbit polyclonal antibody to MULAN
Specificity	Recognizes endogenous levels of MULAN protein
Antibody Type	Primary antibody
Immunogen	Recombinant fusion protein of human MULAN. The exact sequence is proprietary.
Purification	The antibody was purified by immunogen affinity chromatography.
Molecular Weight	Predicted: 39 kD; Observed: 45 kD
Form/Buffer	Liquid in 0.42% Potassium phosphate, 0.87% Sodium chloride, pH 7.3, 30% glycerol, and 0.01% sodium azide.
Alternative Names	C1orf166; GIDE; MAPL; MULAN; RNF218; Mitochondrial ubiquitin ligase activator of NFKB 1; E3 SUMO-protein ligase MUL1; E3 ubiquitin-protein ligase MUL1; Growth inhibition and death E3 ligase; Mitochondrial-anchored protein ligase; MAPL; Putative NF-kappa-B-activating protein 266; RING finger protein 218
Gene Symbol	MUL1
Entrez Gene	79594(Human); 68350(Mouse)
SwissProt	Q969V5(Human); Q8VCM5(Mouse)

\*AREX continuously optimizes our products. Webpage content may not reflect the latest updates. For inquiries, please contact [info@arexbio.com](mailto:info@arexbio.com) or your local distributor.

\*Clone Number, Reactivity, Source/Host and Clonality can be found in the product name and Key Features section above.

**DATASHEET****MULAN Rabbit Polyclonal Antibody**

CAT. NO. APA16218

**DATA**

Western blot analysis of MULAN expression in A375 (A), mouse liver (B) whole cell lysates. (Predicted band size: 39 kD; Observed band size: 45 kD)

**STORAGE**

Store at 4°C short term. For long term storage, store at -20°C, avoiding freeze/thaw cycles.

**NOTE**

For Research Use Only. Not for diagnostic, therapeutics, prophylactic or in vivo use.