

**DATASHEET**

**MYL4 Rabbit Polyclonal Antibody**

CAT. NO. APA16229

**KEY FEATURES**

Target	MYL4	Source / Host	Rabbit
Reactivity	Human, Mouse, Rat	Clonality	Polyclonal
Applications	WB	Conjugation	Unconjugated
Form / Buffer	Liquid in 0.42% Potassium phosphate, 0.87% Sodium chloride, pH 7.3, 30% glycerol, and 0.01% sodium azide.		Storage at -20°C

**BACKGROUND**

Regulatory light chain of myosin. Does not bind calcium.

**APPLICATION**

To ensure optimal assay performance, AREX recommends conducting reagent titration tailored to each testing system for optimal detection results.

WB	1:500 - 1:2000
----	----------------

\*Results are sample-specific. Please refer to your local assay conditions and test parameters for reference.

**PRODUCT OVERVIEW**

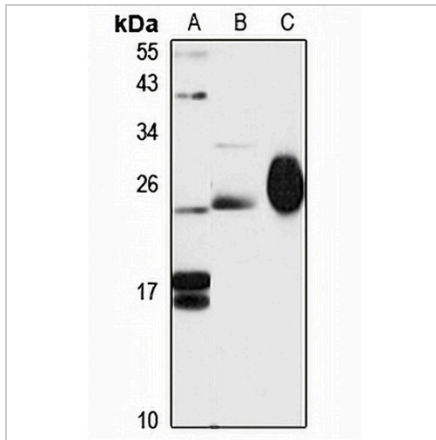
Description	Rabbit polyclonal antibody to MYL4
Specificity	Recognizes endogenous levels of MYL4 protein
Antibody Type	Primary antibody
Immunogen	Recombinant fusion protein of human MYL4. The exact sequence is proprietary.
Purification	The antibody was purified by immunogen affinity chromatography.
Molecular Weight	Predicted: 21 kD; Observed: 22 kD
Form/Buffer	Liquid in 0.42% Potassium phosphate, 0.87% Sodium chloride, pH 7.3, 30% glycerol, and 0.01% sodium azide.
Alternative Names	MLC1; Myosin light chain 4; Myosin light chain 1 embryonic muscle/atrial isoform; Myosin light chain alkali GT-1 isoform
Gene Symbol	MYL4
Entrez Gene	4635(Human)
SwissProt	P12829(Human); P09541(Mouse); P17209(Rat)

\*AREX continuously optimizes our products. Webpage content may not reflect the latest updates. For inquiries, please contact [info@arexbio.com](mailto:info@arexbio.com) or your local distributor.

\*Clone Number, Reactivity, Source/Host and Clonality can be found in the product name and Key Features section above.

**DATASHEET****MYL4 Rabbit Polyclonal Antibody**

CAT. NO. APA16229

**DATA**

Western blot analysis of MYL4 expression in mouse lung (A), mouse testis (B), rat heart (C) whole cell lysates. (Predicted band size: 21 kD; Observed band size: 22 kD)

**STORAGE**

Store at 4°C short term. For long term storage, store at -20°C, avoiding freeze/thaw cycles.

**NOTE**

For Research Use Only. Not for diagnostic, therapeutics, prophylactic or in vivo use.