

DATASHEET

MLCK2 Rabbit Polyclonal Antibody

CAT. NO. APA16230

KEY FEATURES

Target	MLCK2	Source / Host	Rabbit
Reactivity	Human, Mouse, Rat	Clonality	Polyclonal
Applications	WB	Conjugation	Unconjugated
Form / Buffer	Liquid in 0.42% Potassium phosphate, 0.87% Sodium chloride, pH 7.3, 30% glycerol, and 0.01% sodium azide.		Storage at -20°C

BACKGROUND

Implicated in the level of global muscle contraction and cardiac function. Phosphorylates a specific serine in the N-terminus of a myosin light chain.

APPLICATION

To ensure optimal assay performance, AREX recommends conducting reagent titration tailored to each testing system for optimal detection results.

WB	1:500 - 1:2000
----	----------------

*Results are sample-specific. Please refer to your local assay conditions and test parameters for reference.

PRODUCT OVERVIEW

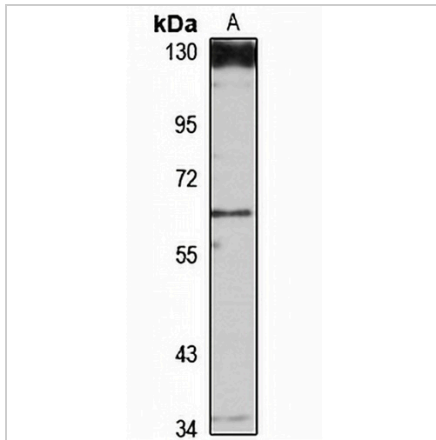
Description	Rabbit polyclonal antibody to MLCK2
Specificity	Recognizes endogenous levels of MLCK2 protein
Antibody Type	Primary antibody
Immunogen	Recombinant fusion protein of human MLCK2. The exact sequence is proprietary.
Purification	The antibody was purified by immunogen affinity chromatography.
Molecular Weight	Predicted: 64 kD; Observed: 65 kD
Form/Buffer	Liquid in 0.42% Potassium phosphate, 0.87% Sodium chloride, pH 7.3, 30% glycerol, and 0.01% sodium azide.
Alternative Names	Myosin light chain kinase 2 skeletal/cardiac muscle; MLCK2
Gene Symbol	MYLK2
Entrez Gene	85366(Human); 228785(Mouse); 117558(Rat)
SwissProt	Q9H1R3(Human); Q8VCR8(Mouse); P20689(Rat)

*AREX continuously optimizes our products. Webpage content may not reflect the latest updates. For inquiries, please contact info@arexbio.com or your local distributor.

*Clone Number, Reactivity, Source/Host and Clonality can be found in the product name and Key Features section above.

DATASHEET**MLCK2 Rabbit Polyclonal Antibody**

CAT. NO. APA16230

DATA

Western blot analysis of MLCK2 expression in Jurkat (A) whole cell lysates. (Predicted band size: 64 kD; Observed band size: 65 kD)

STORAGE

Store at 4°C short term. For long term storage, store at -20°C, avoiding freeze/thaw cycles.

NOTE

For Research Use Only. Not for diagnostic, therapeutics, prophylactic or in vivo use.