

## DATASHEET

# MYLK4 Rabbit Polyclonal Antibody

CAT. NO. APA16231

### KEY FEATURES

Target	MYLK4	Source / Host	Rabbit
Reactivity	Human, Mouse, Rat	Clonality	Polyclonal
Applications	WB	Conjugation	Unconjugated
Form / Buffer	Liquid in 0.42% Potassium phosphate, 0.87% Sodium chloride, pH 7.3, 30% glycerol, and 0.01% sodium azide.		Storage at -20°C

### BACKGROUND

Myosin light chain kinase family member 4 (MYLK4), also known as Sugen kinase 85, SgK085. Belongs to the protein kinase superfamily. CAMK Ser/Thr protein kinase family

### APPLICATION

To ensure optimal assay performance, AREX recommends conducting reagent titration tailored to each testing system for optimal detection results.

WB	1:500 - 1:2000
----	----------------

\*Results are sample-specific. Please refer to your local assay conditions and test parameters for reference.

### PRODUCT OVERVIEW

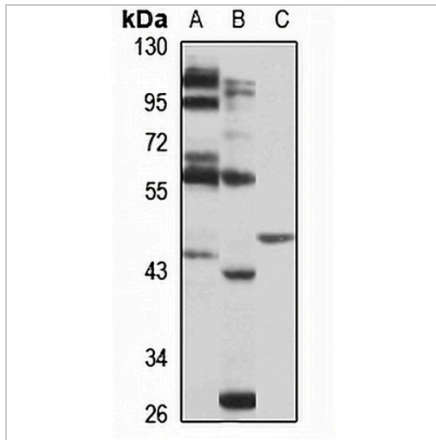
Description	Rabbit polyclonal antibody to MYLK4
Specificity	Recognizes endogenous levels of MYLK4 protein
Antibody Type	Primary antibody
Immunogen	Recombinant fusion protein of human MYLK4. The exact sequence is proprietary.
Purification	The antibody was purified by immunogen affinity chromatography.
Molecular Weight	Predicted: 44 kD; Observed: 40; 44 kD
Form/Buffer	Liquid in 0.42% Potassium phosphate, 0.87% Sodium chloride, pH 7.3, 30% glycerol, and 0.01% sodium azide.
Alternative Names	SGK085; Myosin light chain kinase family member 4; Sugen kinase 85; SgK085
Gene Symbol	MYLK4
Entrez Gene	340156(Human)
SwissProt	Q86YV6(Human); Q5SUV5(Mouse)

\*AREX continuously optimizes our products. Webpage content may not reflect the latest updates. For inquiries, please contact [info@arexbio.com](mailto:info@arexbio.com) or your local distributor.

\*Clone Number, Reactivity, Source/Host and Clonality can be found in the product name and Key Features section above.

**DATASHEET****MYLK4 Rabbit Polyclonal Antibody**

CAT. NO. APA16231

**DATA**

Western blot analysis of MYLK4 expression in HepG2 (A), mouse liver (B), rat pancreas (C) whole cell lysates. (Predicted band size: 44 kD; Observed band size: 40; 44 kD)

**STORAGE**

Store at 4°C short term. For long term storage, store at -20°C, avoiding freeze/thaw cycles.

**NOTE**

For Research Use Only. Not for diagnostic, therapeutics, prophylactic or in vivo use.