

**DATASHEET**

**Myoferlin Rabbit Polyclonal Antibody**

CAT. NO. APA16236

**KEY FEATURES**

Target	Myoferlin	Source / Host	Rabbit
Reactivity	Human, Mouse	Clonality	Polyclonal
Applications	WB	Conjugation	Unconjugated
Form / Buffer	Liquid in 0.42% Potassium phosphate, 0.87% Sodium chloride, pH 7.3, 30% glycerol, and 0.01% sodium azide.		Storage at-20°C

**BACKGROUND**

Calcium/phospholipid-binding protein that plays a role in the plasmalemma repair mechanism of endothelial cells that permits rapid resealing of membranes disrupted by mechanical stress. Involved in endocytic recycling. Implicated in VEGF signal transduction by regulating the levels of the receptor KDR .

**APPLICATION**

To ensure optimal assay performance, AREX recommends conducting reagent titration tailored to each testing system for optimal detection results.

WB	1:500 - 1:2000
----	----------------

\*Results are sample-specific. Please refer to your local assay conditions and test parameters for reference.

**PRODUCT OVERVIEW**

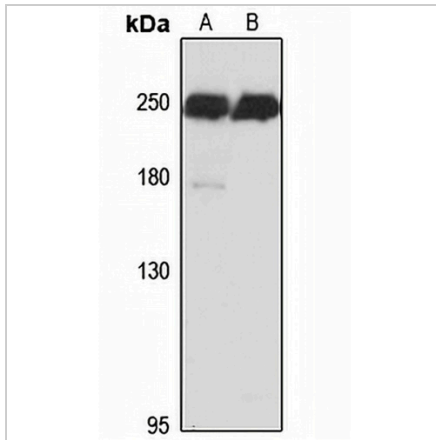
Description	Rabbit polyclonal antibody to Myoferlin
Specificity	Recognizes endogenous levels of Myoferlin protein
Antibody Type	Primary antibody
Immunogen	Recombinant fusion protein of human Myoferlin. The exact sequence is proprietary.
Purification	The antibody was purified by immunogen affinity chromatography.
Molecular Weight	Predicted: 17; Observed: 250 kD
Form/Buffer	Liquid in 0.42% Potassium phosphate, 0.87% Sodium chloride, pH 7.3, 30% glycerol, and 0.01% sodium azide.
Alternative Names	FER1L3; KIAA1207; Myoferlin; Fer-1-like protein 3
Gene Symbol	MYOF
Entrez Gene	26509(Human); 226101(Mouse)
SwissProt	Q9NZM1(Human); Q69ZN7(Mouse)

\*AREX continuously optimizes our products. Webpage content may not reflect the latest updates. For inquiries, please contact [info@arexbio.com](mailto:info@arexbio.com) or your local distributor.

\*Clone Number, Reactivity, Source/Host and Clonality can be found in the product name and Key Features section above.

**DATASHEET****Myoferlin Rabbit Polyclonal Antibody**

CAT. NO. APA16236

**DATA**

Western blot analysis of Myoferlin expression in A549 (A), NIH3T3 (B) whole cell lysates. (Predicted band size: 17; 46; 49; 179; 229; 233; 234 kD; Observed band size: 250 kD)

**STORAGE**

Store at 4°C short term. For long term storage, store at -20°C, avoiding freeze/thaw cycles.

**NOTE**

For Research Use Only. Not for diagnostic, therapeutics, prophylactic or in vivo use.