

## DATASHEET

# Myopalladin Rabbit Polyclonal Antibody

CAT. NO. APA16238

### KEY FEATURES

Target	Myopalladin	Source / Host	Rabbit
Reactivity	Human, Mouse	Clonality	Polyclonal
Applications	WB	Conjugation	Unconjugated
Form / Buffer	Liquid in 0.42% Potassium phosphate, 0.87% Sodium chloride, pH 7.3, 30% glycerol, and 0.01% sodium azide.		Storage at -20°C

### BACKGROUND

Component of the sarcomere that tethers together nebulin (skeletal muscle) and nebulin (cardiac muscle) to alpha-actinin, at the Z lines.

### APPLICATION

To ensure optimal assay performance, AREX recommends conducting reagent titration tailored to each testing system for optimal detection results.

WB	1:500 - 1:2000
----	----------------

\*Results are sample-specific. Please refer to your local assay conditions and test parameters for reference.

### PRODUCT OVERVIEW

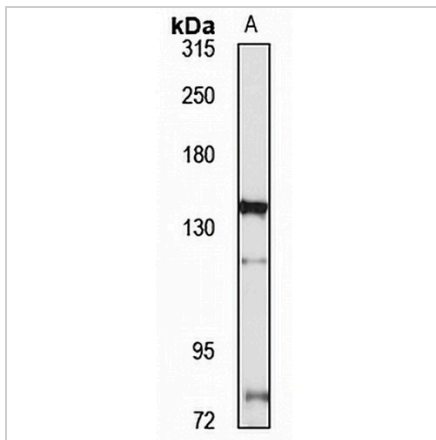
Description	Rabbit polyclonal antibody to Myopalladin
Specificity	Recognizes endogenous levels of Myopalladin protein
Antibody Type	Primary antibody
Immunogen	Recombinant fusion protein of human Myopalladin. The exact sequence is proprietary.
Purification	The antibody was purified by immunogen affinity chromatography.
Molecular Weight	Predicted: 56; Observed: 145 kD
Form/Buffer	Liquid in 0.42% Potassium phosphate, 0.87% Sodium chloride, pH 7.3, 30% glycerol, and 0.01% sodium azide.
Alternative Names	MYOP; Myopalladin; 145 kDa sarcomeric protein
Gene Symbol	MYPN
Entrez Gene	84665(Human); 68802(Mouse)
SwissProt	Q86TC9(Human); Q5DTJ9(Mouse)

\*AREX continuously optimizes our products. Webpage content may not reflect the latest updates. For inquiries, please contact [info@arexbio.com](mailto:info@arexbio.com) or your local distributor.

\*Clone Number, Reactivity, Source/Host and Clonality can be found in the product name and Key Features section above.

**DATASHEET****Myopalladin Rabbit Polyclonal Antibody**

CAT. NO. APA16238

**DATA**

Western blot analysis of Myopalladin expression in HepG2 (A) whole cell lysates.  
(Predicted band size: 56; 114; 145 kD; Observed band size: 145 kD)

**STORAGE**

Store at 4°C short term. For long term storage, store at -20°C, avoiding freeze/thaw cycles.

**NOTE**

For Research Use Only. Not for diagnostic, therapeutics, prophylactic or in vivo use.